

Northern Territory Labour Market

August 2018

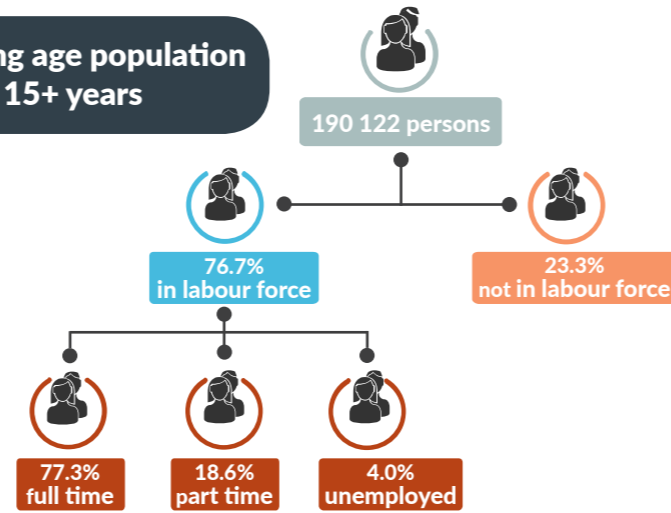


Population

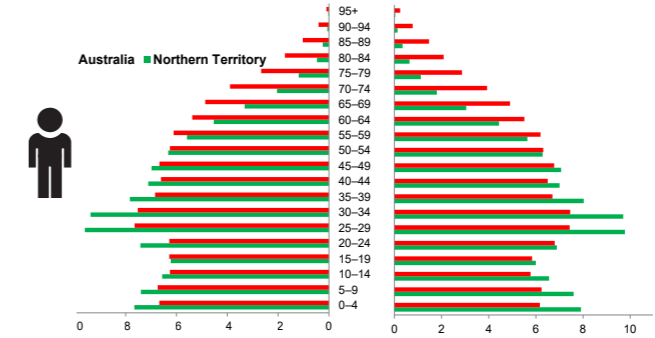
246 726 total resident population
30.2% Aboriginal (Census data)
59.1% live in Greater Darwin area
1.0% of National population

25.0 million

Working age population 15+ years



Population pyramid



NT Population younger

32.6

NT median age (years)

37.3

National median age (years)



Employed

139 613 persons
 107 persons



Unemployed

levels **5999 persons** rate **4.0%**
 50
 National unemployment rate **5.3%**
 0.1 ppt



Youth unemployment

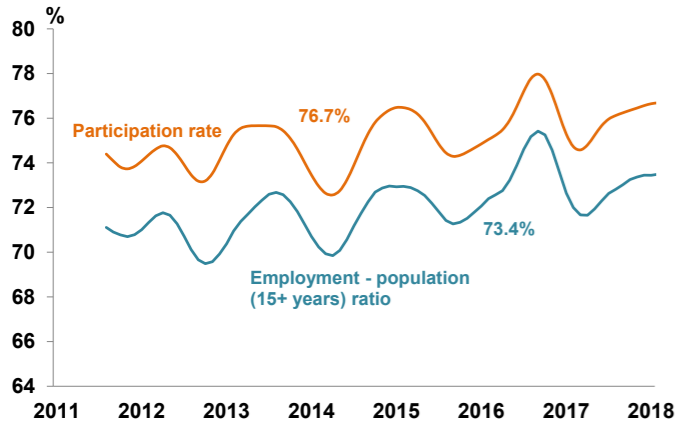
year average levels **2138 persons** rate **10.4%**
 473 persons 2.7 ppt

Job vacancies

Yearly change
 NT **32.4%** Australia **19.0%**
 Quarterly change
 NT **5.4%** Australia **1.2%**

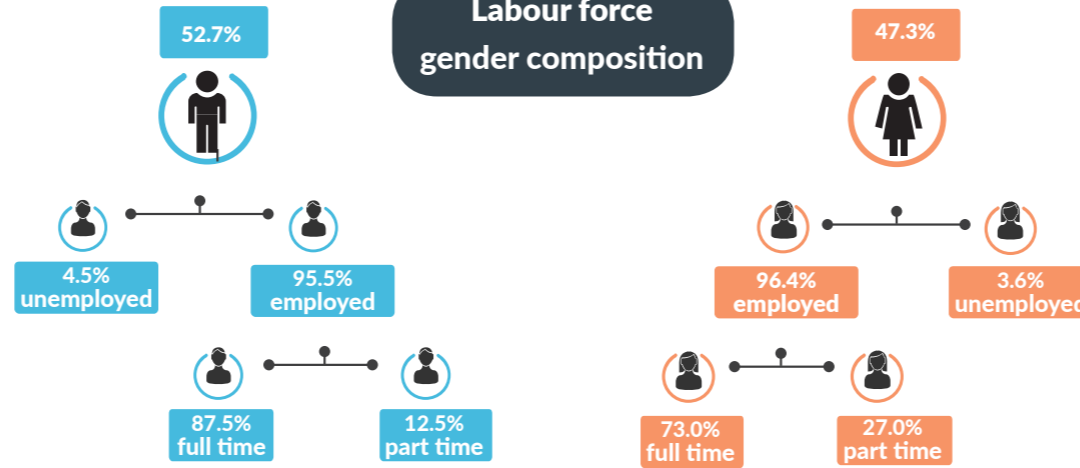
3.3 unemployed persons per every job vacancy nationally
1.5 unemployed persons per every NT job vacancy

Employment and participation rates

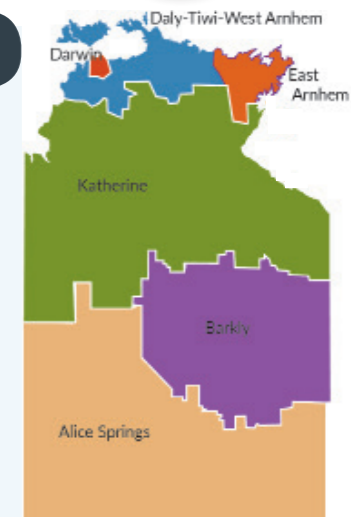
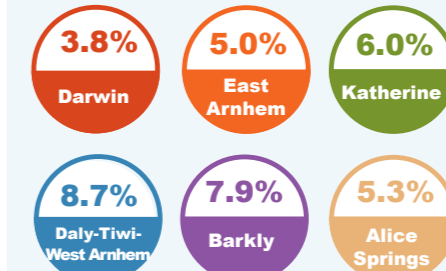


NT Aboriginal participation rate (2014-15) **47%**
 National participation rate **65.5%**

Labour force gender composition



Regional unemployment rates



Industry share of employment

Top 5

Retail 8.2%

Education 9.2%

Health Care 15.3%

Construction 10.5%

Public Admin 13.5%

62.0% of employees in the NT are employed in the Greater Darwin region

Employment growth by industry

Top 5

Industry	Job Numbers	Year on Year %
Health care and social assistance	21 050	23.9
Arts and recreation services	4102	20.6
Information media and telecommunications	1505	20.4
Manufacturing	4170	12.5
Other services	6568	9.7

Wage price index

0.6% NT change in price of wages
 0.3% NT change in private sector
 1.2% NT change in public sector
 0.4% National change in price of wages