

Northern Territory Labour Market

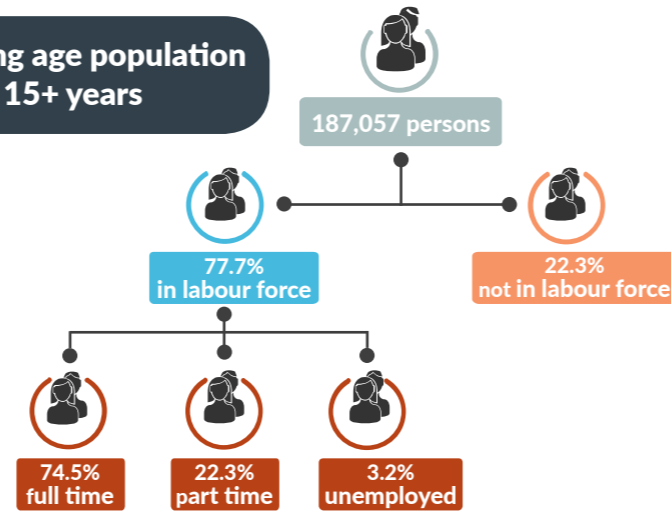
May 2017



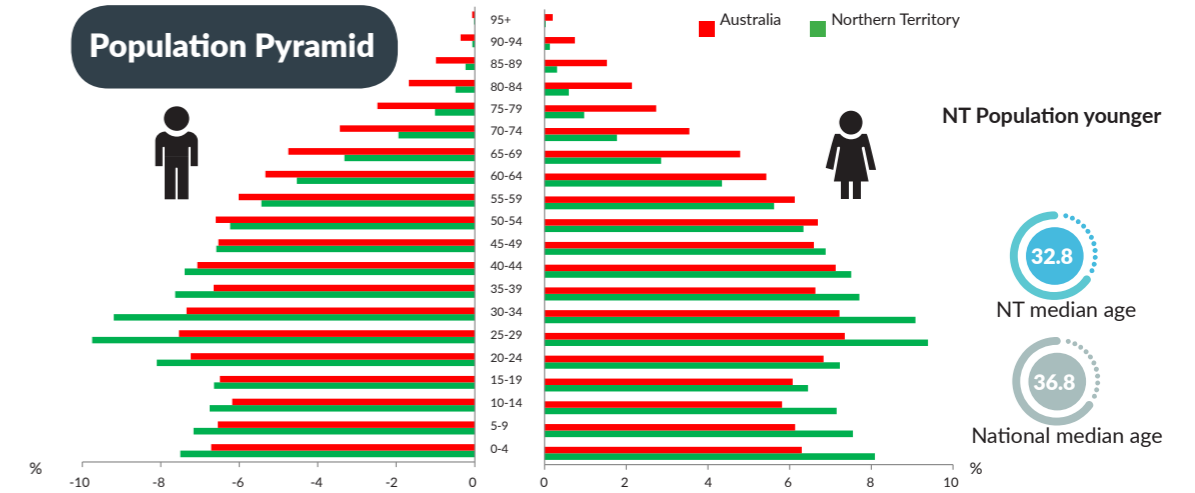
NT Population

245,657 total resident population
30% Indigenous (Census data)
58% live in Greater Darwin area
1% of National population
24.13 million

Working age population 15+ years



Population Pyramid



Employed

140,535 persons
▲ 19 persons

Total unemployed

levels **4,646 persons** rate **3.2%**
▼ 161 persons ▼ 0.1 ppt
 National unemployment rate **5.7%**
0.0 ppt

Youth unemployment

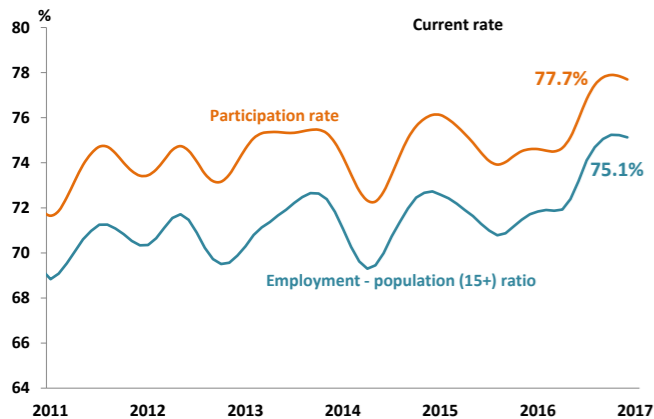
year average levels **1,800 persons** rate **8.1%**
▼ 100 persons ▼ 0.1 ppt

Job vacancies

Yearly change
 NT **▼ 1.0%** Australia **▲ 8.6%**
 Quarterly change
 NT **▲ 7.4%** Australia **▲ 0.6%**

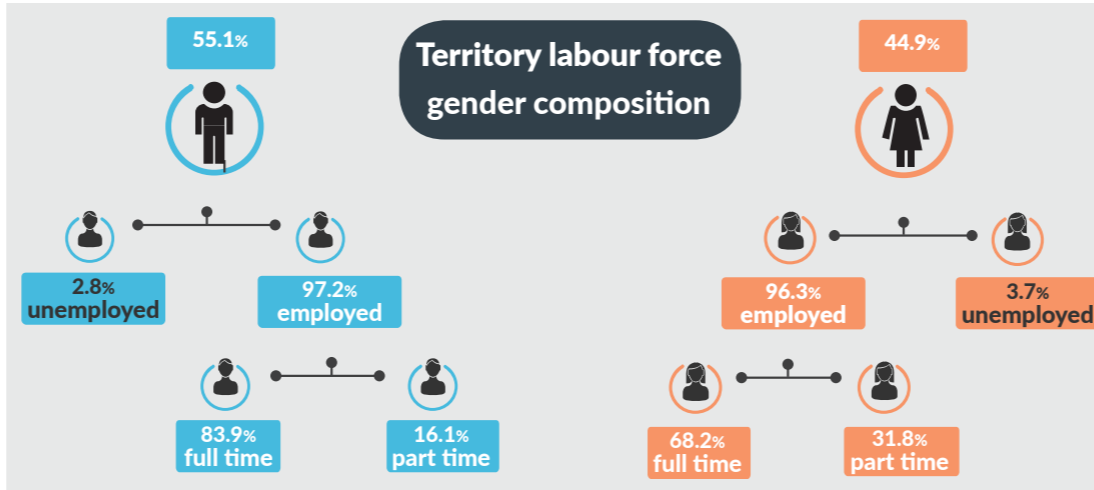
4.0 unemployed persons per every job vacancy Nationally
1.8 unemployed persons per every NT job vacancy

NT employment and participation rates

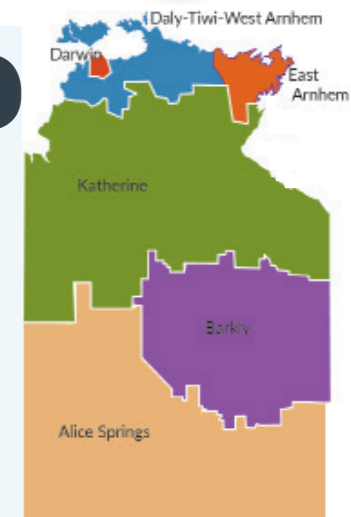
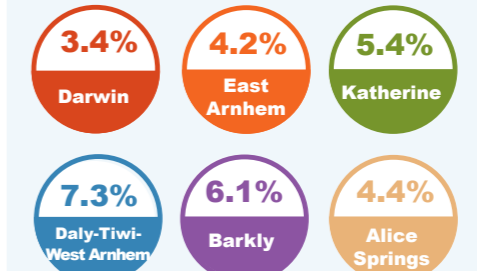


NT Indigenous participation rate (2014-15)
47%
 National participation rate
64.8%

Territory labour force gender composition



Regional unemployment rates



Industry share of employment

Top 5

Retail **8.5%**

Education **8.4%**

Health Care **12.1%**

Construction **10.3%**

Public Admin **17.2%**

61.5% of employees in the NT are employed in the Greater Darwin region

Employment growth by industry

Top 5

Industry	Job Numbers	Year on Year %
Agriculture, forestry and fishing	1,837	99.4
Rental, hiring and real estate services	2,530	21.8
Retail trade	11,540	19.1
Accommodation and food services	10,260	14.1
Mining	6,314	12.0

Wage price index

▲ 0.2% NT change in price of wages
▲ 0.3% NT change in private sector
▲ 0.2% NT change in public sector
▲ 0.4% National change in price of wages