

Northern Territory Labour Market

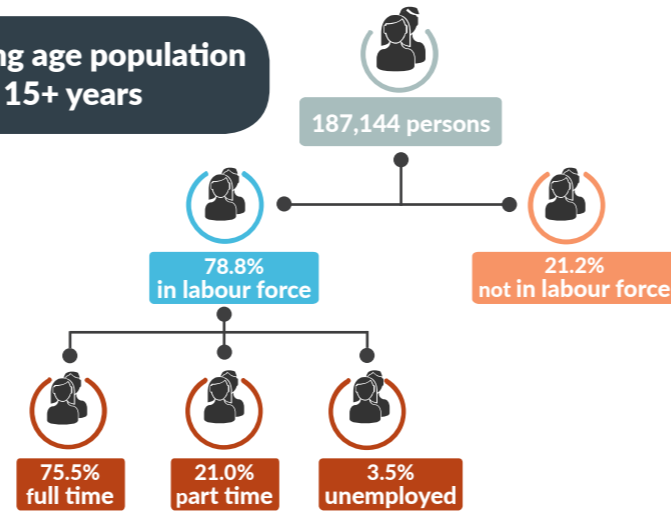
April 2017



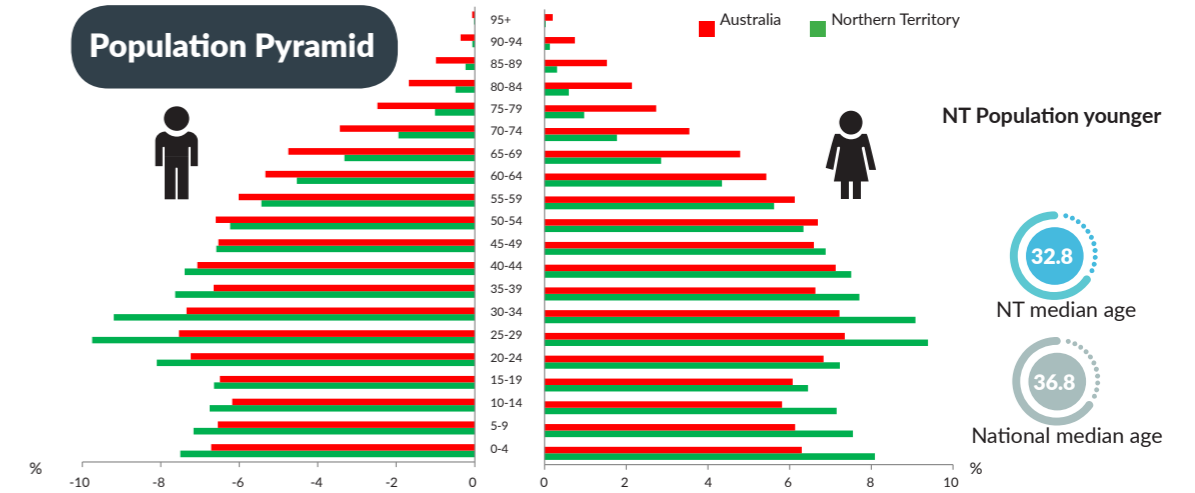
NT Population

245,657 total resident population
30% Indigenous (Census data)
58% live in Greater Darwin area
1% of National population
24.13 million

Working age population 15+ years



Population Pyramid



Employed

142,125 persons
667 persons



Total unemployed

levels **5,134 persons** rate **3.5%**
37 persons **0.0 ppt**
 National unemployment rate **5.8%**



Youth unemployment

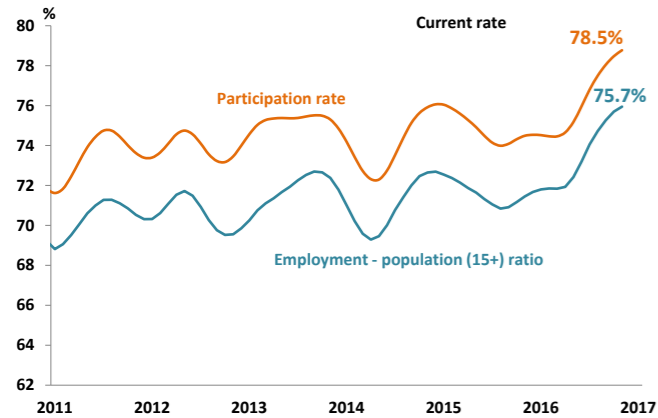
year average levels **1,800 persons** rate **8.0%**
200 persons **0.7ppt**

Job vacancies

Yearly change
 NT **1.0%** Australia **8.6%**
 Quarterly change
 NT **7.4%** Australia **0.6%**

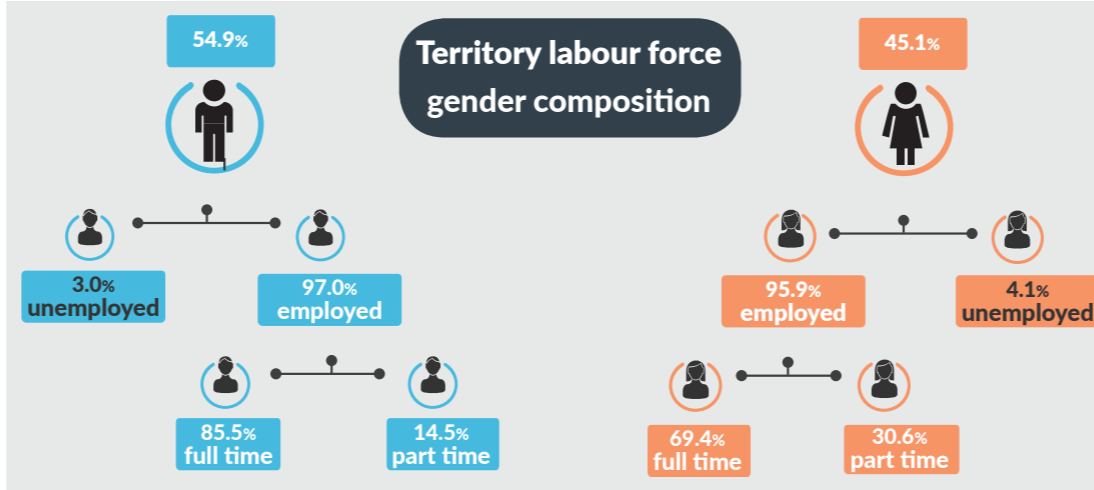
4.0 unemployed persons per every job vacancy Nationally
1.8 unemployed persons per every NT job vacancy

NT employment and participation rates

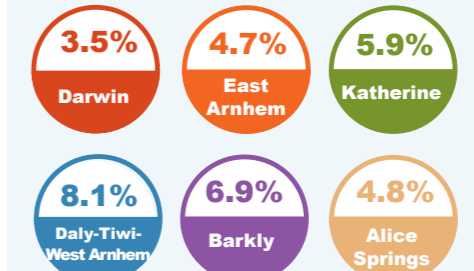


NT Indigenous participation rate (2014-15) **47%**
 National participation rate **64.8%**

Territory labour force gender composition



Regional unemployment rates



Industry share of employment

Top 5

Retail **8.5%**

Education **8.4%**

Health Care **12.1%**

Construction **10.3%**

Public Admin **17.2%**

61.5% of employees in the NT are employed in the Greater Darwin region

Employment growth by industry

Top 5

Industry	Job Numbers	Year on Year %
Agriculture, forestry and fishing	1,837	99.4
Rental, hiring and real estate services	2,530	21.8
Retail trade	11,540	19.1
Accommodation and food services	10,260	14.1
Mining	6,314	12.0

Wage price index

- 0.2%** NT change in price of wages
- 0.3%** NT change in private sector
- 0.2%** NT change in public sector
- 0.4%** National change in price of wages