

# Northern Territory Labour Market

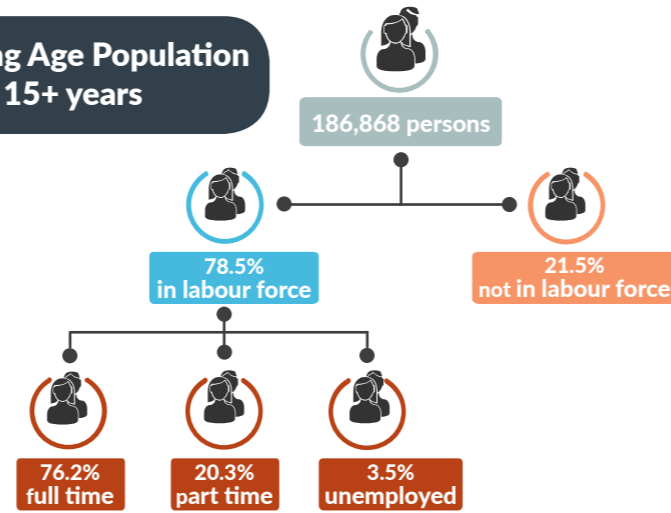
March 2017



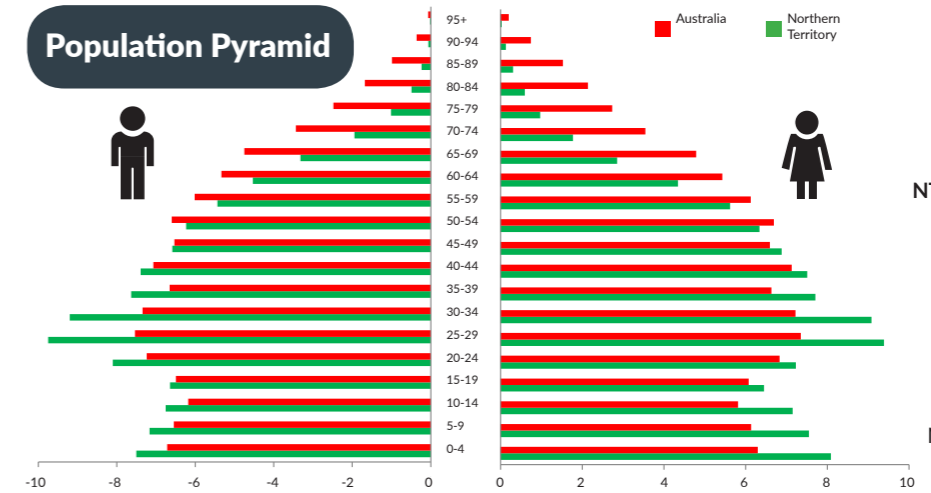
## NT Population

**245,657** total resident population  
**30%** Indigenous (Census data)  
**58%** live in Greater Darwin area  
**1%** of National population  
**24.13 million**

## Working Age Population 15+ years



## Population Pyramid



NT Population younger  
**32.8**  
 NT median age  
**36.8**  
 National median age



## Employed

**141,544 persons**  
**860 persons**



## Total unemployed

levels **5,093 persons** rate **3.5%**  
**72 persons** **0.0 ppt**  
 National unemployment rate **5.9%**  
**0.1 ppt**



## Youth unemployment

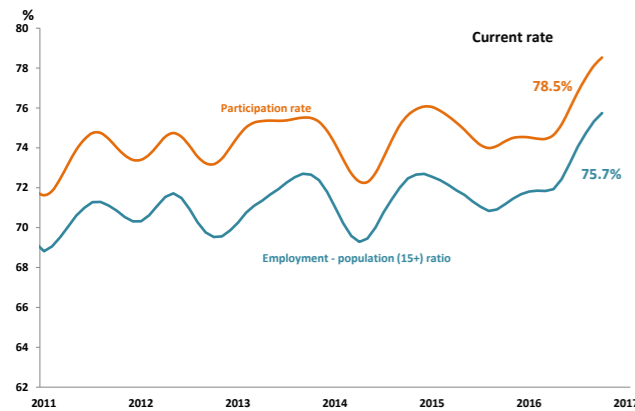
year average levels **1,700 persons** rate **7.7%**  
**400 persons** **1.4 ppt**

## Job vacancies

Yearly change  
 NT **1.0%** Australia **8.6%**  
 Quarterly change  
 NT **7.4%** Australia **0.6%**

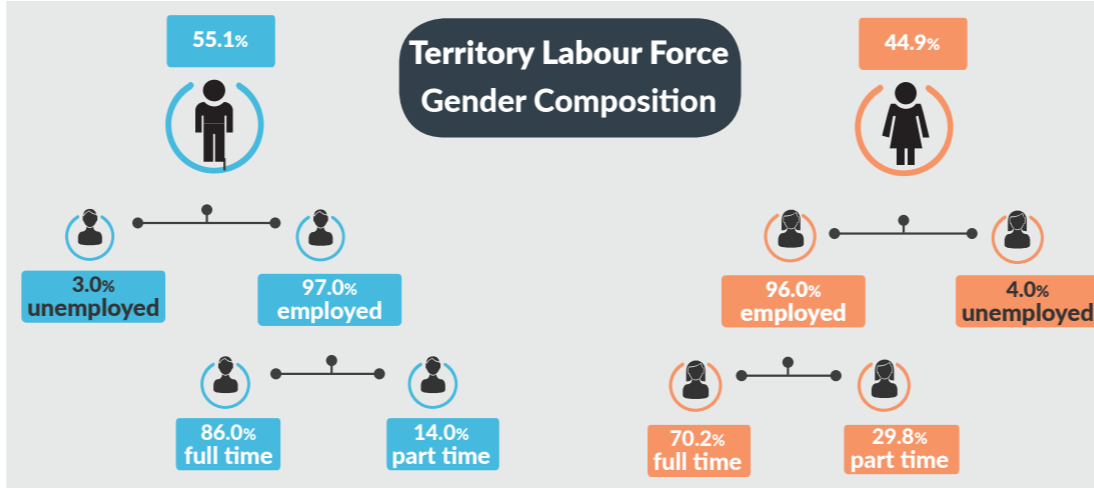
**4.0** unemployed persons per every job vacancy Nationally  
**1.8** unemployed persons per every NT job vacancy

## NT employment and participation rates

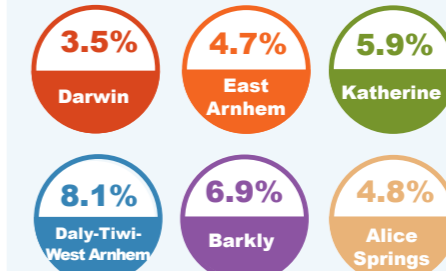


NT Indigenous participation rate (2014-15)  
**47%**  
 National participation rate  
**64.7%**

## Territory Labour Force Gender Composition



## Regional unemployment rates



## Industry share of Employment

**Top 5**

Retail **8.5%**

Education **8.4%**

Health Care **12.1%**

Construction **10.3%**

Public Admin **17.2%**

**61.5%** of employees in the NT are employed in the Greater Darwin region

## Employment Growth by Industry

**Top 5**

Industry	Job Numbers	Year on Year %
Agriculture, forestry and fishing	1,837	99.4
Rental, hiring and real estate services	2,530	21.8
Retail trade	11,540	19.1
Accommodation and food services	10,260	14.1
Mining	6,314	12.0

## Wage Price Index

- 0.5%** change in price of wages NT
- 0.3%** NT change in private sector
- 0.8%** NT change in public sector
- 0.4%** change in price of wages National