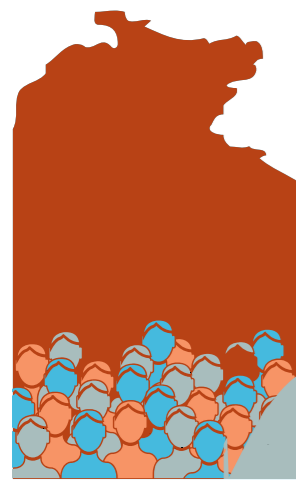


Northern Territory Labour Market

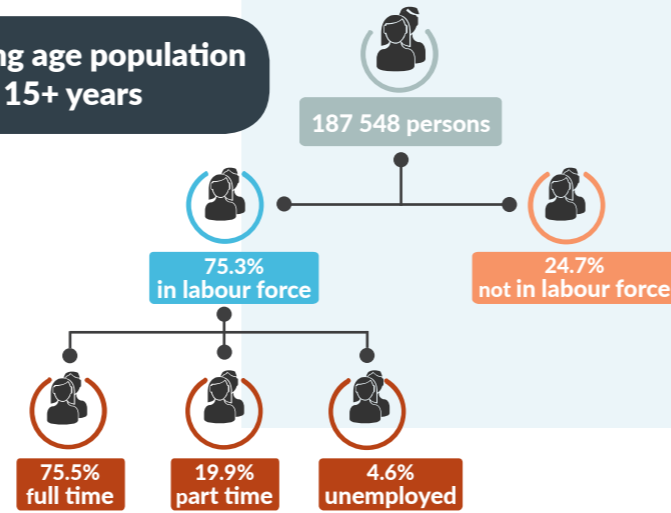
November 2017



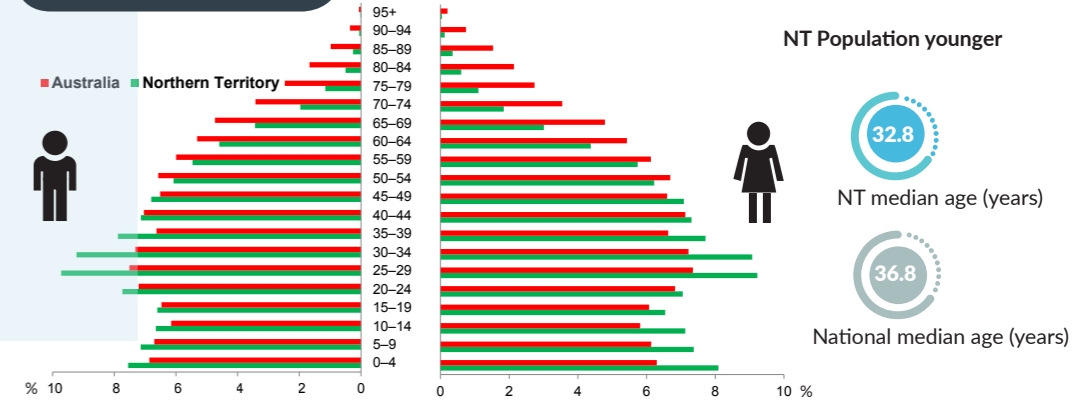
NT Population

246 105 total resident population
30.3% Aboriginal (Census data)
59% live in Greater Darwin area
1.0% of National population
24.7 million

Working age population 15+ years



Population Pyramid



Employed

134 912 persons
▲ 399 persons



Total unemployed

levels **6573 persons** rate **4.6%**
▲ 376 persons **▲ 0.2 ppt**
 National unemployment rate **5.4%**
 — flat



Youth unemployment

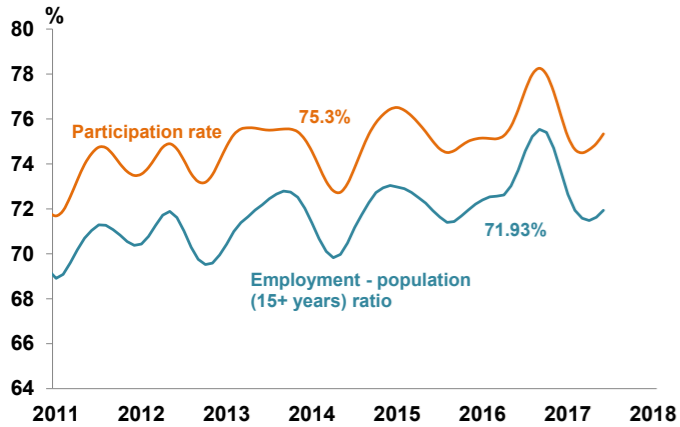
year average levels **1696 persons** rate **8.0%**
▲ 38 persons **▲ 0.4 pts**

Job vacancies

Yearly change
 NT **▲ 30.2%** Australia **▲ 11.0%**
 Quarterly change
 NT **▲ 22.6%** Australia **▲ 14.2%**

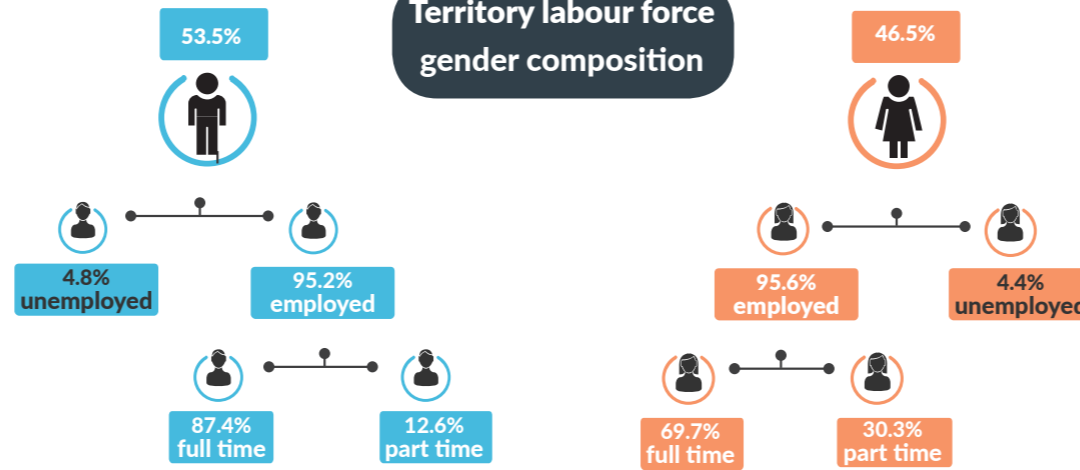
4.0 unemployed persons per every job vacancy nationally
1.5 unemployed persons per every NT job vacancy

NT employment and participation rates

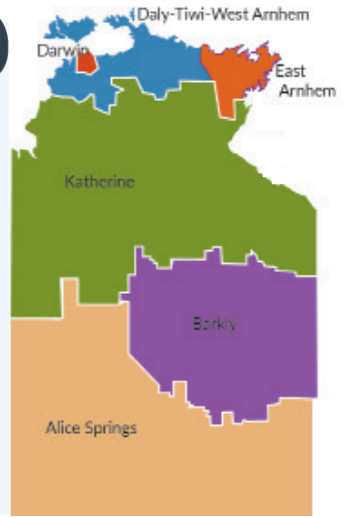
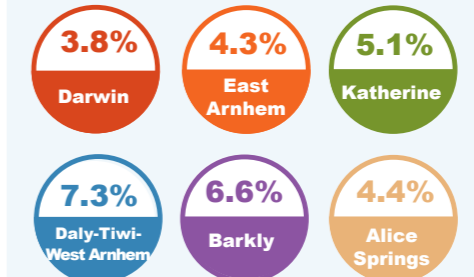


NT Aboriginal participation rate (2014-15) **47%**
 National participation rate **65.4%**

Territory labour force gender composition



Regional unemployment rates



Industry share of employment

Top 5

Retail **8.7%**

Education **9.6%**

Health Care **12.3%**

Construction **10.5%**

Public Admin **15.6%**

61.5% of employees in the NT are employed in the Greater Darwin region

Employment growth by industry

Top 5

Industry	Job Numbers	Year on Year %
Agriculture, forestry and fishing	1587	24.5
Accommodation and food services	10 410	16.9
Education and training	13 113	15.8
Retail trade	11 888	14.4
Information media and telecommunications	1121	11.7

Wage price index

- ▲ 0.5%** NT change in price of wages
- ▲ 0.6%** NT change in private sector
- ▲ 0.3%** NT change in public sector
- ▲ 0.8%** National change in price of wages