

# Northern Territory Labour Market

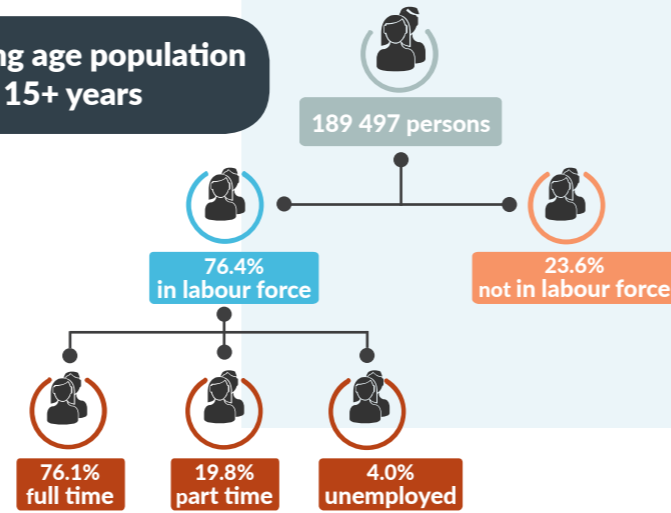
May 2018



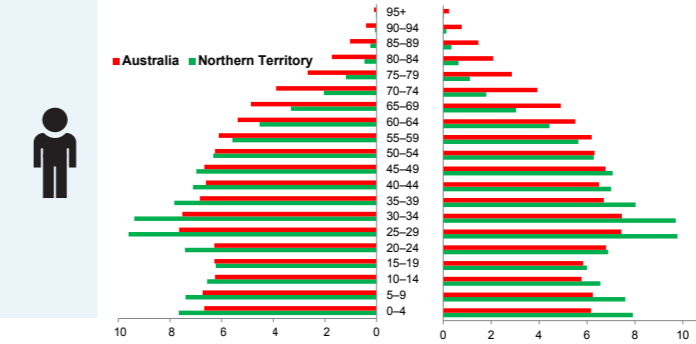
## NT Population

**246 065** total resident population  
**30.3%** Aboriginal (Census data)  
**59%** live in Greater Darwin area  
**1.0%** of National population  
**24.9 million**

## Working age population 15+ years



## Population Pyramid



NT Population younger

**32.8**

NT median age (years)

**36.8**

National median age (years)



## Employed

**139 337 persons**  
 ▲ **637 persons**



## Total unemployed

levels **5876 persons** rate **4.0%**  
 ▼ **84 persons** — flat  
 National unemployment rate **5.5%**  
 — flat



## Youth unemployment

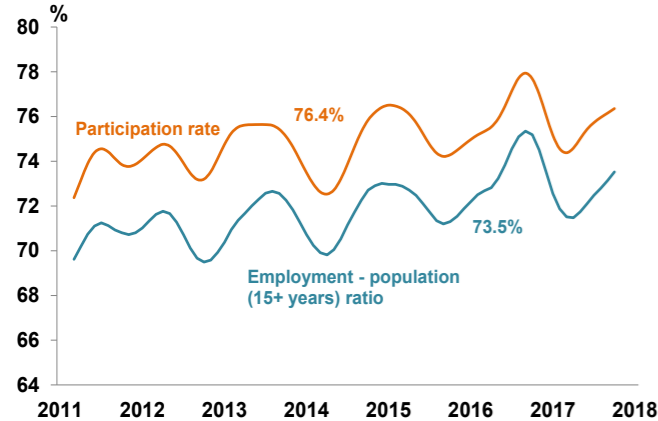
year average levels **1988 persons** rate **9.8%**  
 ▲ **54 persons** ▲ **2.0 ppt**

## Job vacancies

Yearly change  
 NT ▲ **32.4%** Australia ▲ **19.0%**  
 Quarterly change  
 NT ▲ **5.4%** Australia ▲ **1.2%**

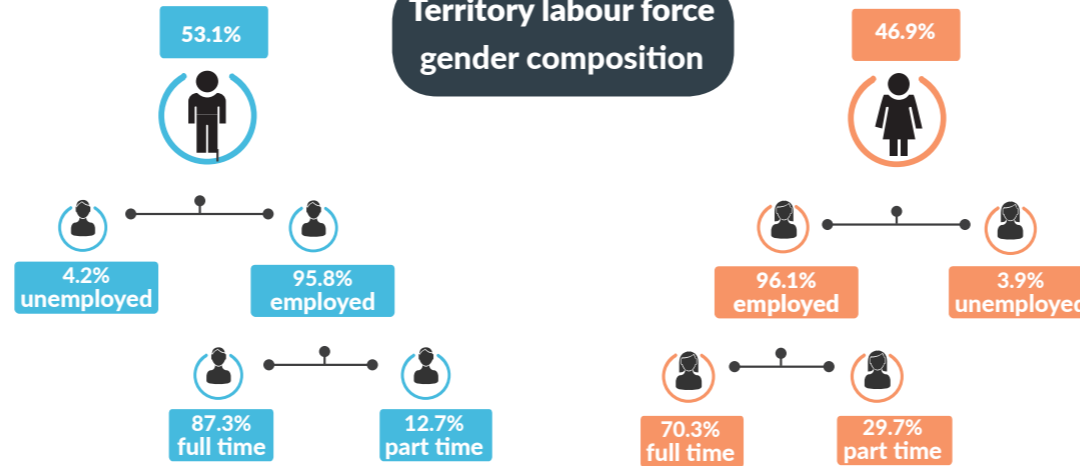
**3.3** unemployed persons per every job vacancy nationally  
**2.0** unemployed persons per every NT job vacancy

## NT employment and participation rates

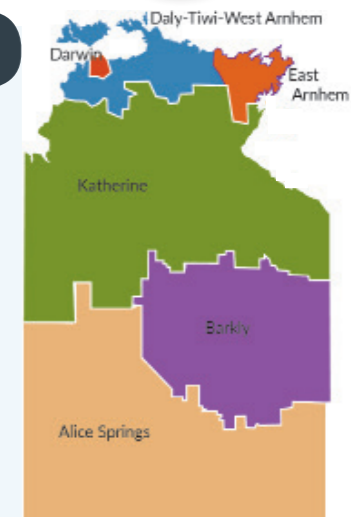
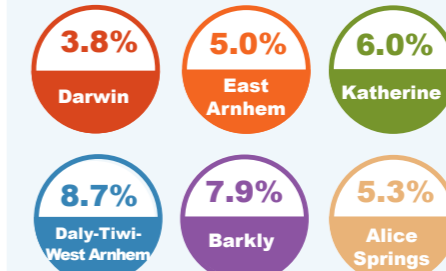


NT Aboriginal participation rate (2014-15) **47%**  
 National participation rate **65.5%**

## Territory labour force gender composition



## Regional unemployment rates



## Industry share of employment

Health Care **15.3%**

**62.0%** of employees in the NT are employed in the Greater Darwin region

**Top 5**

Education **9.2%**

Retail **8.2%**

Construction **10.5%**

Public Admin **13.5%**

## Employment growth by industry

**Top 5**

Industry	Job Numbers	Year on Year %
Health care and social assistance	21 050	23.9
Arts and recreation services	4102	20.6
Information media and telecommunications	1505	20.4
Manufacturing	4170	12.5
Other services	6568	9.7

## Wage price index

- ▲ **0.2%** NT change in price of wages
- ▲ **0.3%** NT change in private sector
- ▲ **0.2%** NT change in public sector
- ▲ **0.4%** National change in price of wages