

Northern Territory Labour Market

December 2018

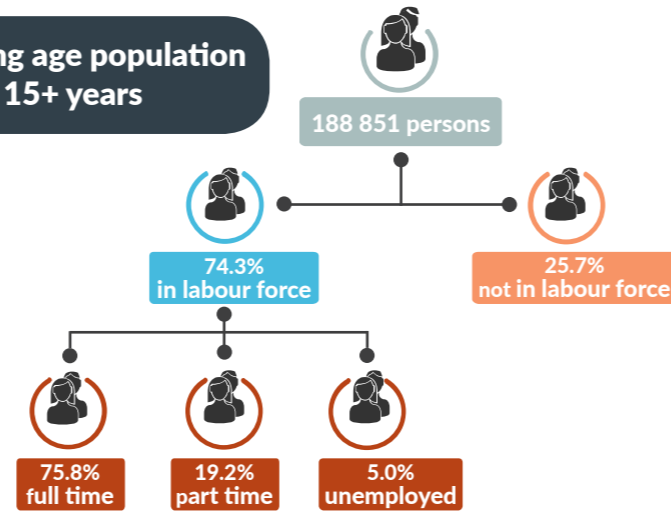


Population

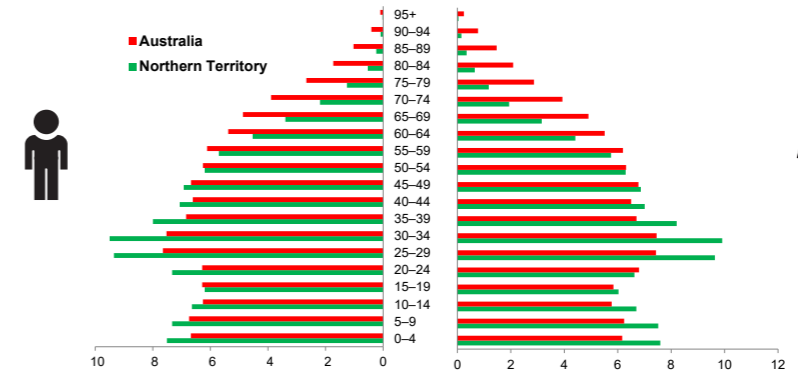
247 281 total resident population
30.3% Aboriginal (Census data)
59.1% live in Greater Darwin area
1.0% of National population

25.2 million

Working age population 15+ years



Population pyramid



Younger Territory population

32.6

NT median age (years)

37.3

National median age (years)

Employed

133 852 persons
 ▲ **173 persons**



Unemployed

levels **6919 persons** rate **5.0%**
 ▲ **175** ▲ **0.1 ppt**
 National unemployment rate **5.0%**
 — flat



Youth unemployment

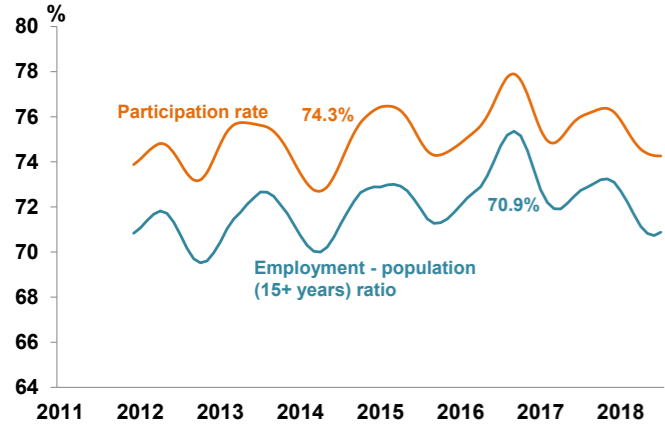
year average levels **2150 persons** rate **10.8%**
 ▼ **40 persons** ▼ **2.1 pts**

Job vacancies

Yearly change
 NT ▼ **16.8%** Australia ▲ **18.3%**
 Quarterly change
 NT ▼ **8.1%** Australia ▲ **1.1%**

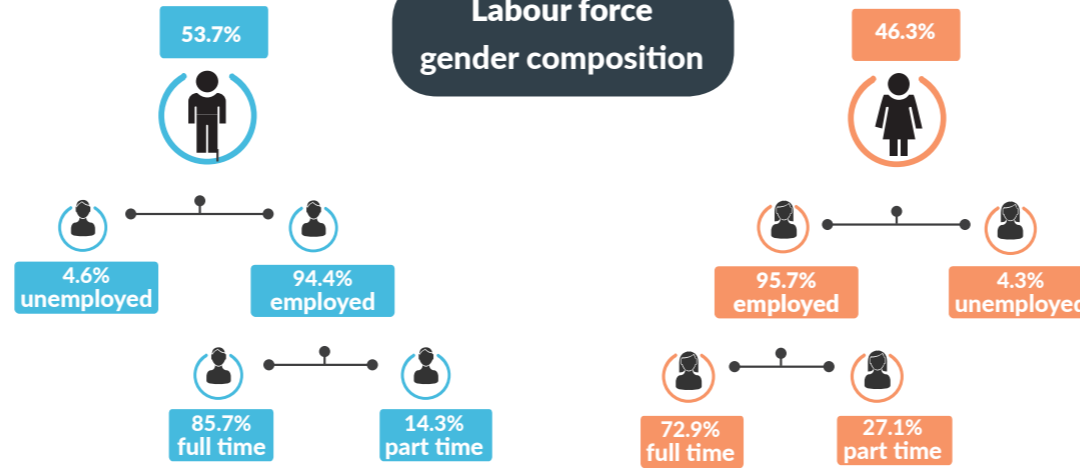
2.9 unemployed persons per every job vacancy nationally
1.8 unemployed persons per every NT job vacancy

Employment and participation rates

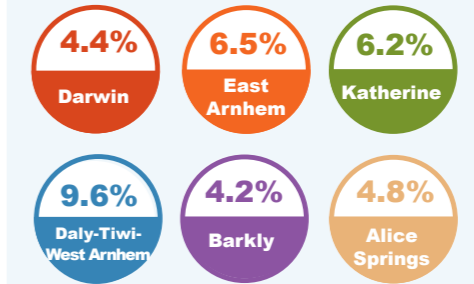


NT Aboriginal participation rate (2014-15) **47%**
 National participation rate **65.6%**

Labour force gender composition



Regional unemployment rates



Industry share of employment



Employment growth by industry

Top 5

Industry	Job Numbers	Year on Year %
Information media and telecommunications	1800	56.2
Arts and recreation services	4500	31.1
Administrative and support services	5400	28.5
Agriculture, forestry and fishing	1924	26.4
Other services	6900	12.7

Wage price index

- ▲ **0.6%** NT change in price of wages
- ▲ **0.3%** NT change in private sector
- ▲ **1.2%** NT change in public sector
- ▲ **0.4%** National change in price of wages