

# Northern Territory Labour Market

February 2018

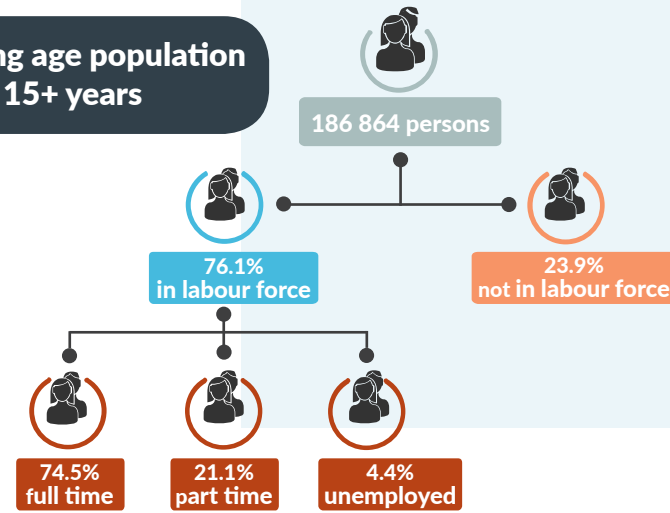


## NT Population

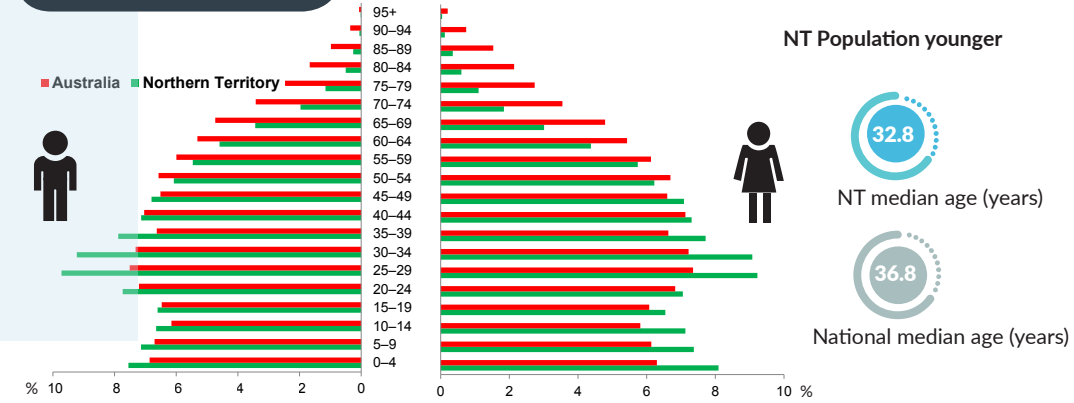
246 065 total resident population  
 30.3% Aboriginal (Census data)  
 59% live in Greater Darwin area  
 1.0% of National population

24.8 million

## Working age population 15+ years



## Population Pyramid



## Northern Territory

### Employed

136 035 persons  
 ▲ 222 persons

### Total unemployed

levels 6242 persons  
 ▼ 148 persons  
 rate 4.4%  
 ▼ 0.1 ppt  
 National unemployment rate 5.5%  
 flat

### Youth unemployment

year average levels 1849 persons  
 ▼ 64 persons  
 rate 8.9%  
 ▲ 1.4 ppt

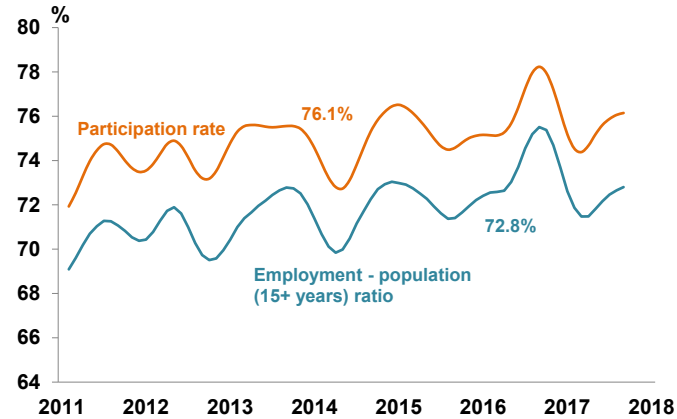
### Job vacancies

Yearly change  
 NT ▲ 31.0%  
 Australia ▲ 12.9%

Quarterly change  
 NT ▼ 13.2%  
 Australia ▲ 3.6%

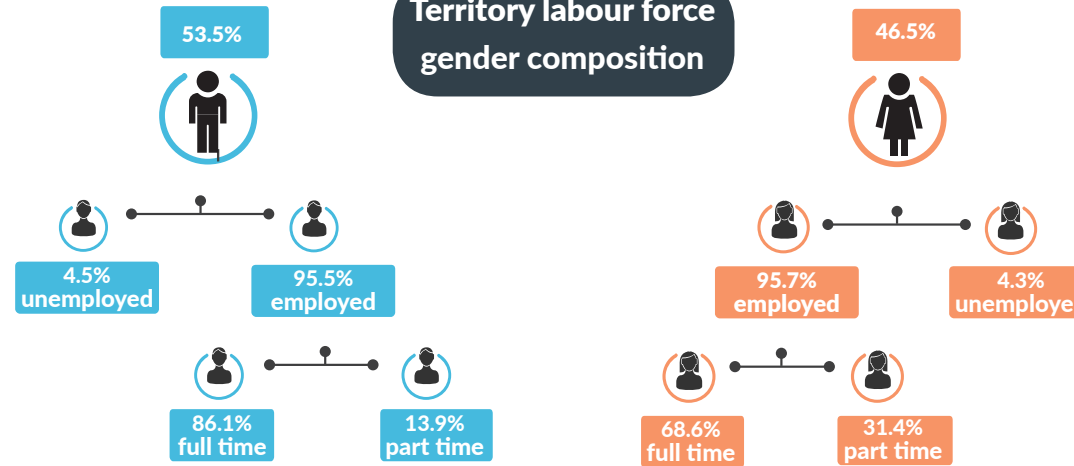
3.3 unemployed persons per every job vacancy nationally  
 2.0 unemployed persons per every NT job vacancy

## NT employment and participation rates

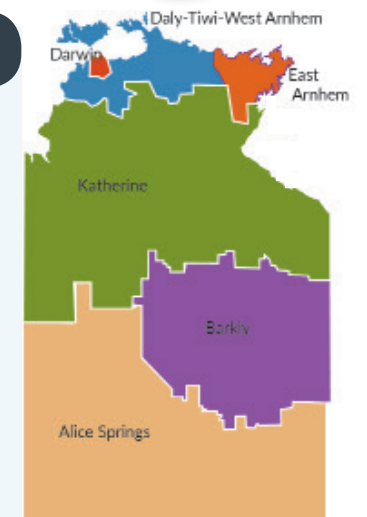
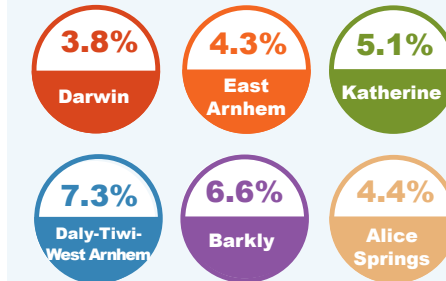


NT Aboriginal participation rate (2014-15) 47%  
 National participation rate 65.7%

## Territory labour force gender composition



## Regional unemployment rates



## Industry share of employment

### Top 5

Retail 8.3%

Education 9.8%

Health Care 13.7%

Construction 10.6%

Public Admin 14.9%

61.5% of employees in the NT are employed in the Greater Darwin region

## Employment growth by industry

### Top 5

Industry	Job Numbers	Year on Year %
Education and training	13 510	19.9
Health care and social assistance	18 889	16.3
Manufacturing	4115	14.5
Administrative and support services	4206	10.1
Information media and telecommunications	1173	7.3

## Wage price index

- ▲ 0.5% NT change in price of wages
- ▲ 0.6% NT change in private sector
- ▲ 0.3% NT change in public sector
- ▲ 0.8% National change in price of wages