

Northern Territory Labour Market

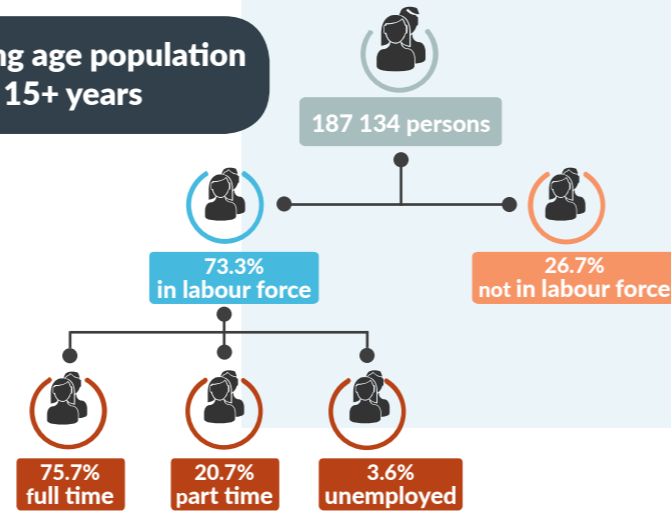
August 2017



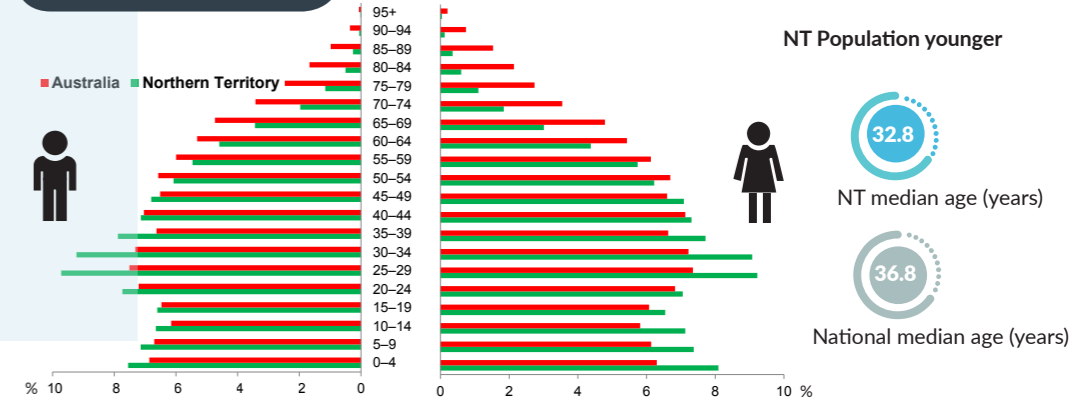
NT Population

245 048 total resident population
25.5% Aboriginal (Census data)
59% live in Greater Darwin area
1.0% of National population
24.62 million

Working age population 15+ years



Population Pyramid



Northern Territory

Employed

132 224 persons
 ▼ **1282 persons**

Total unemployed

levels **4992 persons** rate **3.6%**
 ▼ **204 persons** ▲ **0.1 ppt**
 National unemployment rate **5.6%**
 0.0 ppt

Youth unemployment

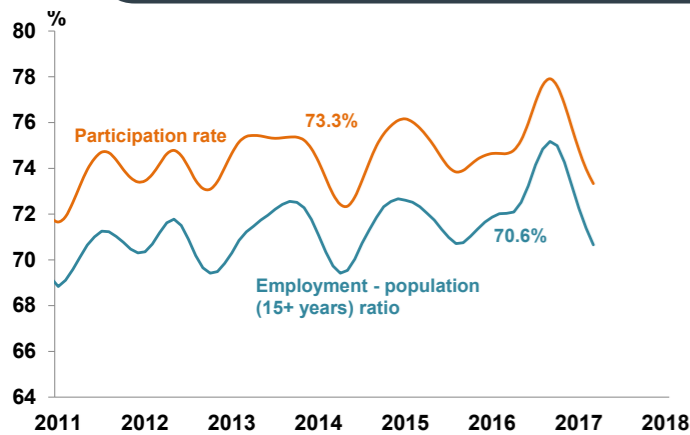
year average levels **1800 persons** rate **7.9%**
 ▼ **54 persons** ▼ **0.2 ppt**

Job vacancies

Yearly change
 NT ▲ **14.4%** Australia ▲ **9.4%**
 Quarterly change
 ▲ **6.9%** ▼ **2.4%**

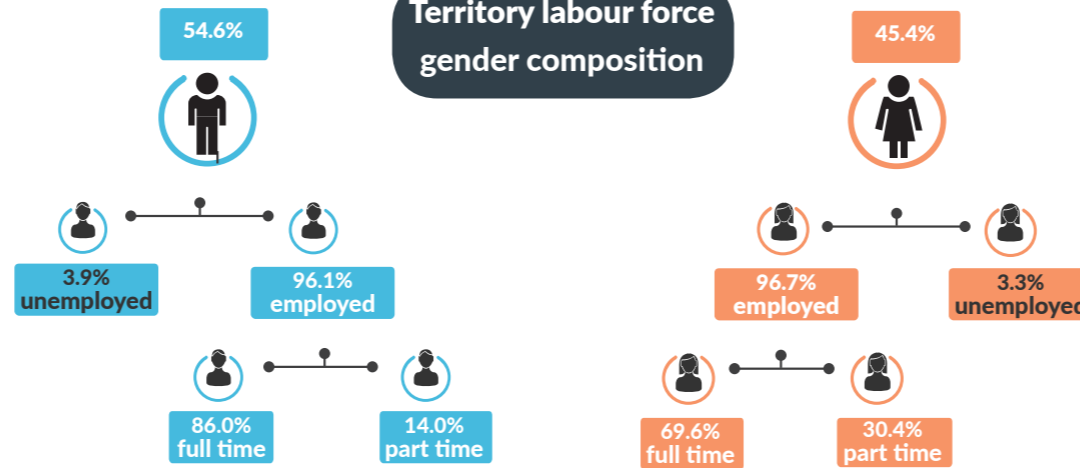
4.0 unemployed persons per every job vacancy nationally
1.5 unemployed persons per every NT job vacancy

NT employment and participation rates

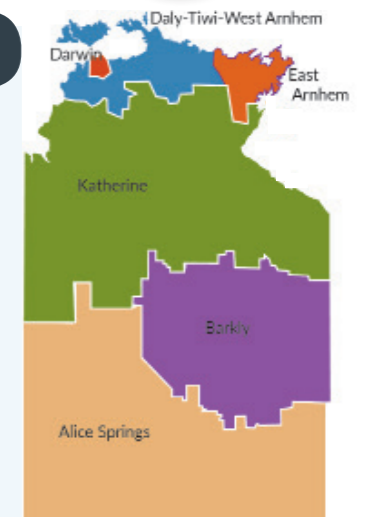
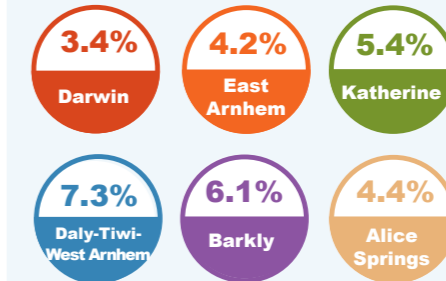


NT Aboriginal participation rate (2014-15) **47%**
 National participation rate **65.0%**

Territory labour force gender composition



Regional unemployment rates



Industry share of employment

Top 5

Retail **8.6%**

Education **9.2%**

Health Care **11.9%**

Construction **10.4%**

Public Admin **16.4%**

61.5% of employees in the NT are employed in the Greater Darwin region

Employment growth by industry

Top 5

Industry	Job Numbers	Year on Year %
Agriculture, forestry and fishing	1957	115.0
Retail trade	11 714	16.8
Electricity, gas, water and waste services	2711	15.9
Professional, scientific and technical services	7428	14.1
Information media and telecommunications	1211	12.7

Wage price index

- ▲ **0.2%** NT change in price of wages
- ▲ **0.3%** NT change in private sector
- ▲ **0.1%** NT change in public sector
- ▲ **0.4%** National change in price of wages