

Northern Territory Labour Market

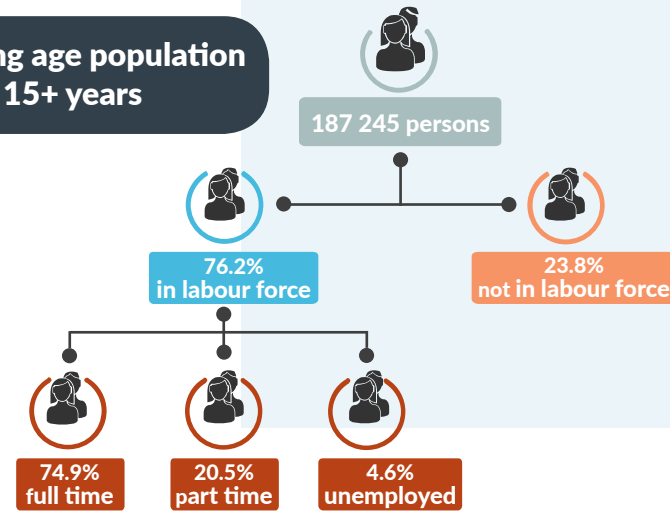
January 2018



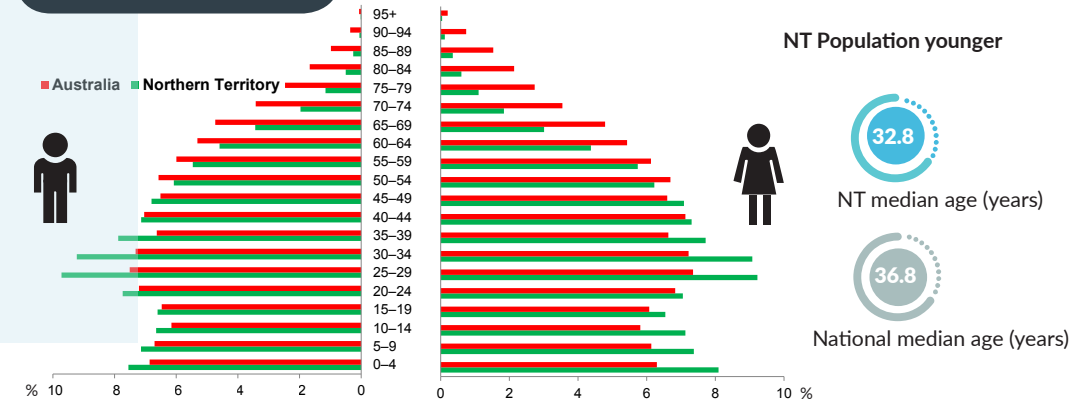
NT Population

246 105 total resident population
30.3% Aboriginal (Census data)
59% live in Greater Darwin area
1.0% of National population
24.8 million

Working age population 15+ years



Population Pyramid



Employed

136 078 persons
▲ 316 persons



Total unemployed

levels **6599 persons** rate **4.6%**
▼ 24 persons **▼ 0.1 ppt**
 National unemployment rate **5.5%**
 — flat



Youth unemployment

year average levels **1789 persons** rate **8.5%**
▲ 171 persons **▲ 1.0 ppt**

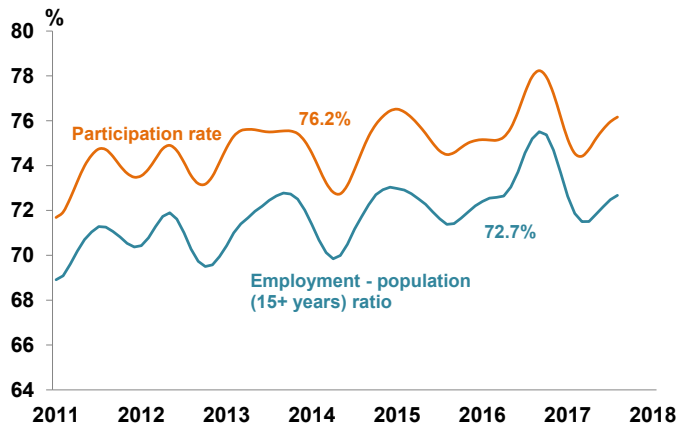
Job vacancies



Yearly change
 NT **▲ 31.0%** Australia **▲ 12.9%**
 Quarterly change
 NT **▼ 13.2%** Australia **▲ 3.6%**

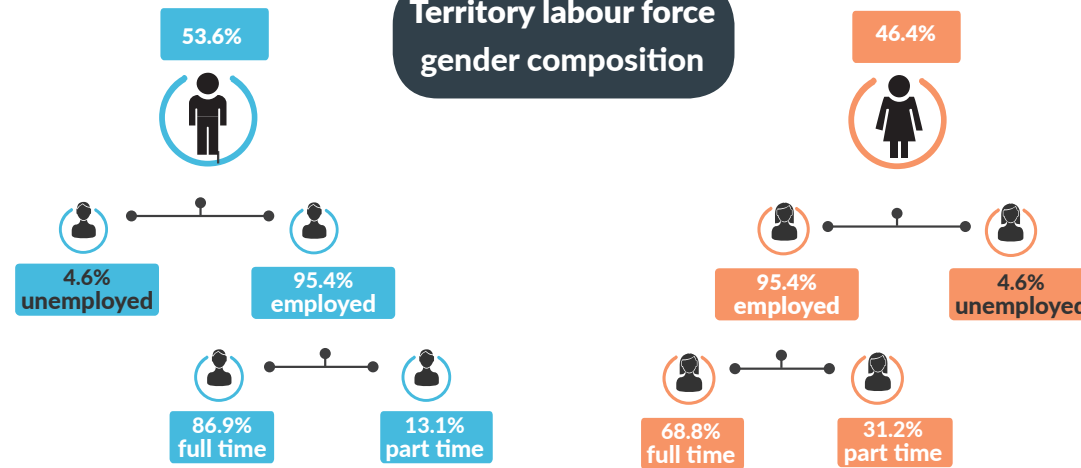
3.3 unemployed persons per every job vacancy nationally
2.0 unemployed persons per every NT job vacancy

NT employment and participation rates

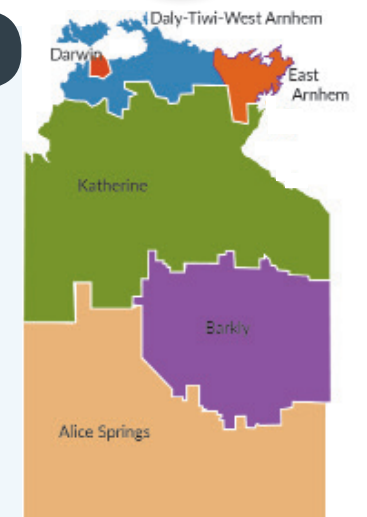
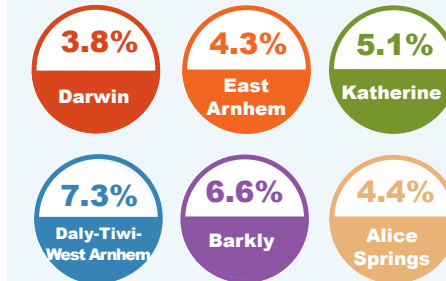


NT Aboriginal participation rate (2014-15) **47%**
 National participation rate **65.6%**

Territory labour force gender composition



Regional unemployment rates



Industry share of employment

Top 5

Retail **8.3%**

Education **9.8%**

Health Care **13.7%**

Construction **10.6%**

Public Admin **14.9%**

61.5% of employees in the NT are employed in the Greater Darwin region

Employment growth by industry

Top 5

Industry	Job Numbers	Year on Year %
Education and training	13 510	19.9
Health care and social assistance	18 889	16.3
Manufacturing	4115	14.5
Administrative and support services	4206	10.1
Information media and telecommunications	1173	7.3

Wage price index

▲ 0.5% NT change in price of wages
▲ 0.6% NT change in private sector
▲ 0.3% NT change in public sector
▲ 0.8% National change in price of wages