

Northern Territory Labour Market

September 2018

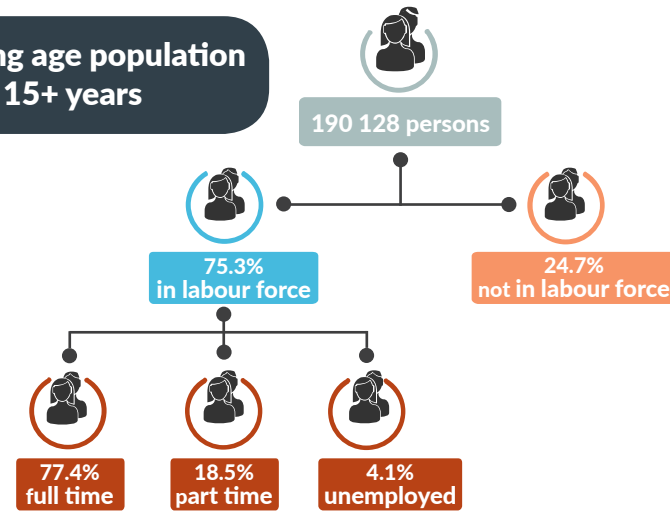


Population

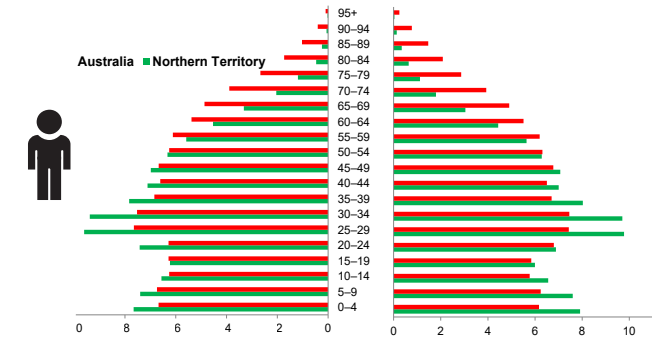
246 688 total resident population
30.2% Aboriginal (Census data)
59.1% live in Greater Darwin area
1.0% of National population

25.1 million

Working age population 15+ years



Population pyramid



NT Population younger

32.6

NT median age (years)

37.3

National median age (years)



Employed

137 245 persons
 ▼ **733 persons**



Unemployed

levels **5938 persons** rate **4.1%**
 ▲ **57** ▲ **0.1 ppt**
 National unemployment rate **5.2%**
 — flat



Youth unemployment

year average levels **2148 persons** rate **10.5%**
 ▲ **10 persons** ▲ **0.1 ppt**

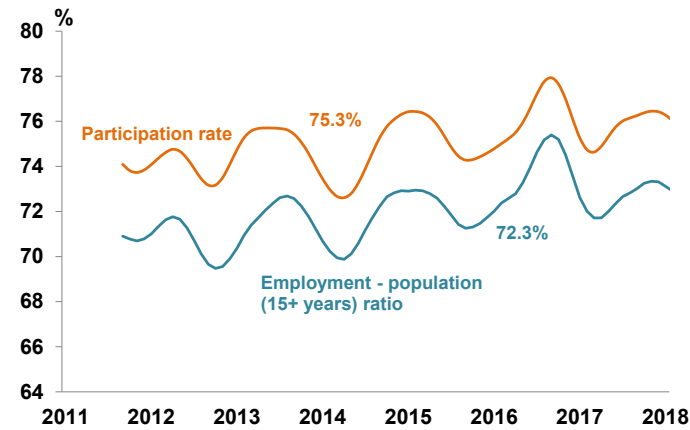
Job vacancies

Yearly change
 NT ▼ **16.8%** Australia ▲ **19.1%**
 Quarterly change
 NT ▼ **5.1%** Australia ▲ **7.3%**

3.1 unemployed persons per every job vacancy nationally

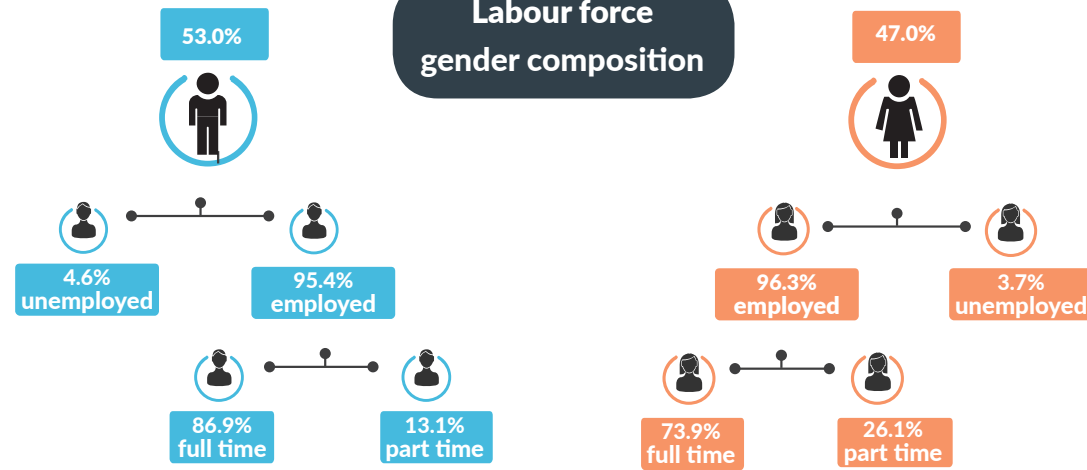
1.6 unemployed persons per every NT job vacancy

Employment and participation rates

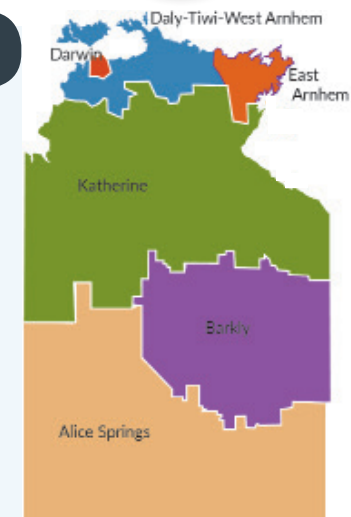
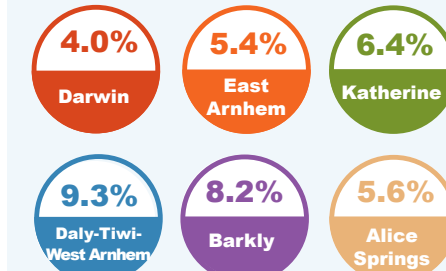


NT Aboriginal participation rate (2014-15) **47%**
 National participation rate **65.6%**

Labour force gender composition



Regional unemployment rates



Industry share of employment

Health Care **15.0%**

62.0% of employees in the NT are employed in the Greater Darwin region

Top 5

Retail **8.1%**

Education **8.6%**

Construction **10.1%**

Employment growth by industry

Top 5

Industry	Job Numbers	Year on Year %
Agriculture, forestry and fishing	2175	39.8
Information media and telecommunications	1592	35.4
Arts and recreation services	4490	31.4
Administrative and support services	5119	20.6
Health care and social assistance	20 575	16.0

Wage price index

▲ **0.6%** NT change in price of wages
 ▲ **0.3%** NT change in private sector
 ▲ **1.2%** NT change in public sector
 ▲ **0.4%** National change in price of wages