

Northern Territory Labour Market

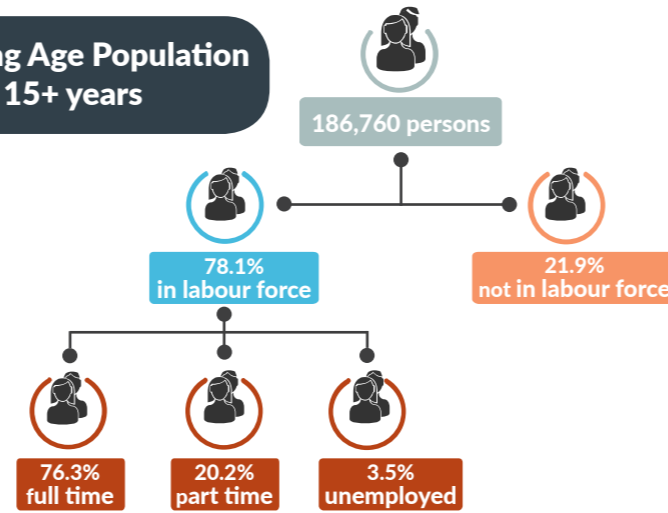
February 2017



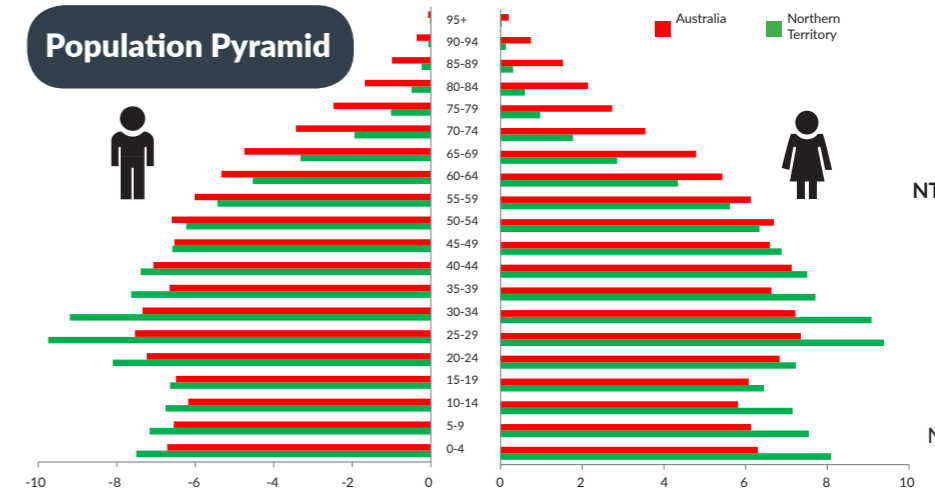
NT Population

244,880 total resident population
30% Indigenous (Census data)
58% live in Greater Darwin area
1% of National population
24.13 million

Working Age Population 15+ years



Population Pyramid



Employed

140,604 persons
▲ 1,109 persons



Total unemployed

levels **5,165 persons** rate **3.5%**
▼ 53 persons **▼ 0.1 ppt**
 National unemployment rate **5.8%**
0.0 ppt



Youth unemployment

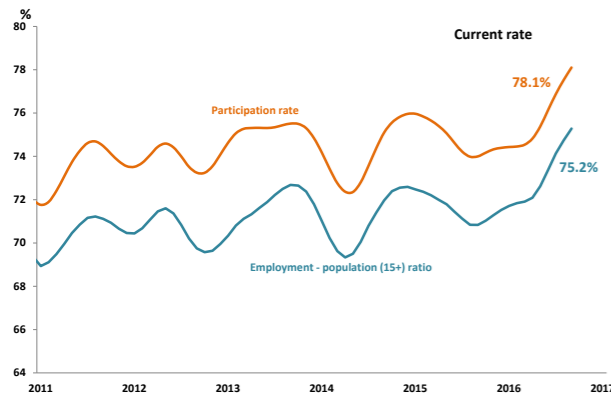
year average levels **1,800 persons** rate **7.9%**
▼ 400 persons **▼ 1.4 ppt**

Job vacancies

Yearly change
 NT **▼ 5.7%** Australia **▲ 10.2%**
 Quarterly change
▲ 12.5% **▲ 3.4%**

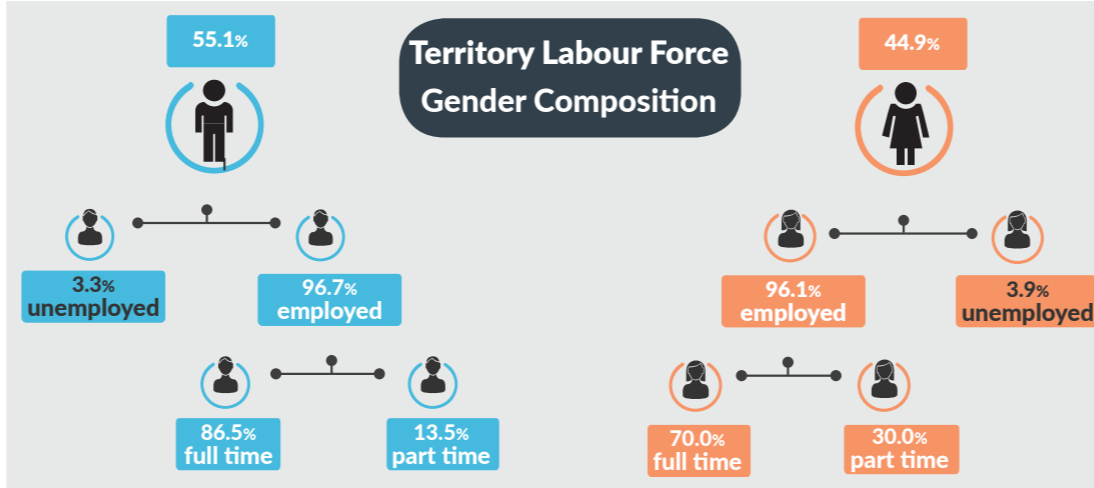
4.0 unemployed persons per every job vacancy Nationally
1.9 unemployed persons per every NT job vacancy

NT employment and participation rates

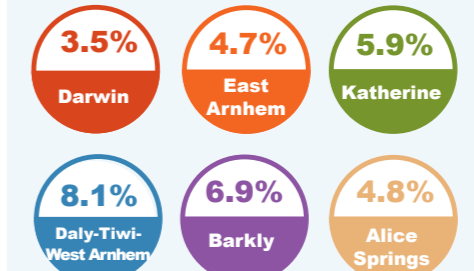


NT Indigenous participation rate (2014-15) **47%**
 National participation rate **64.6%**

Territory Labour Force Gender Composition



Regional unemployment rates



Industry share of Employment

Top 5

Retail **8.1%**

Education **8.3%**

Health Care **11.8%**

Construction **10.7%**

Public Admin **17.4%**

61.5% of employees in the NT are employed in the Greater Darwin region

Employment Growth by Industry

Top 5

Industry	Job Numbers	Year on Year %
Agriculture, forestry and fishing	1,658	66.4
Financial and insurance services	1,829	21.7
Rental, hiring and real estate services	2,377	19.7
Accommodation and food services	9,799	11.4
Retail trade	6,922	9.9

Wage Price Index

▲ 0.5% change in price of wages NT
▲ 0.3% NT change in private sector
▲ 0.8% NT change in public sector
▲ 0.4% change in price of wages National