

# Northern Territory Labour Market

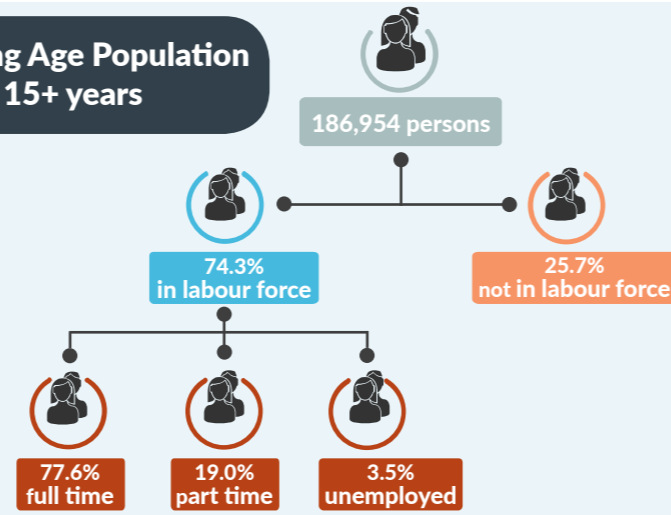
September 2016



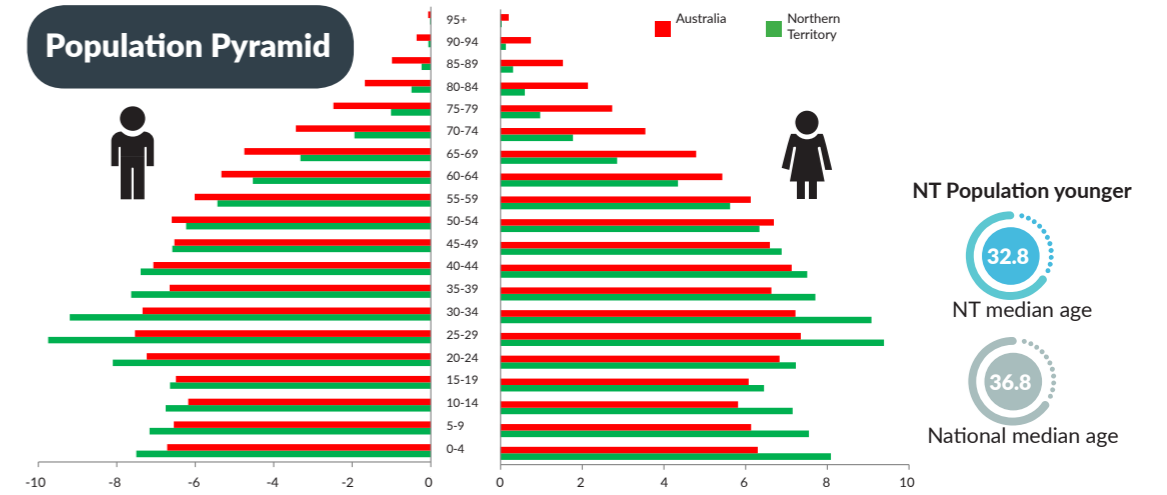
## NT Population

**244,031** total resident population  
**30%** Indigenous (Census data)  
**58%** live in Greater Darwin area  
**1%** of National population  
**24.08 million**

## Working Age Population 15+ years



## Population Pyramid



## Employed

**134,181 persons**  
**▲ 106 persons**



## Total unemployed

levels **4,828 persons** rate **3.5%**  
**▼ 134 persons** **▼ 0.1 ppt**  
 National unemployment rate **5.7%**  
**— 0.0 %**



## Youth unemployment

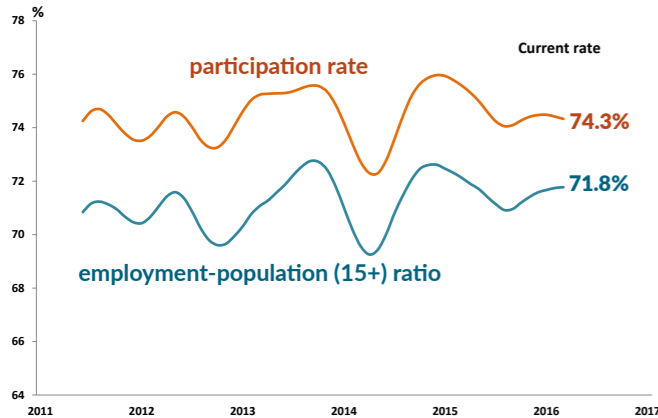
year average levels **1800 persons** rate **8.3%**  
**▼ 500 persons** **▼ 1.8 ppt**

## Job vacancies

Yearly change  
 NT **▼ 26.5%** Australia **▲ 11.0%**  
 Monthly change  
 NT **▼ 11.5%** Australia **▼ 5.6%**

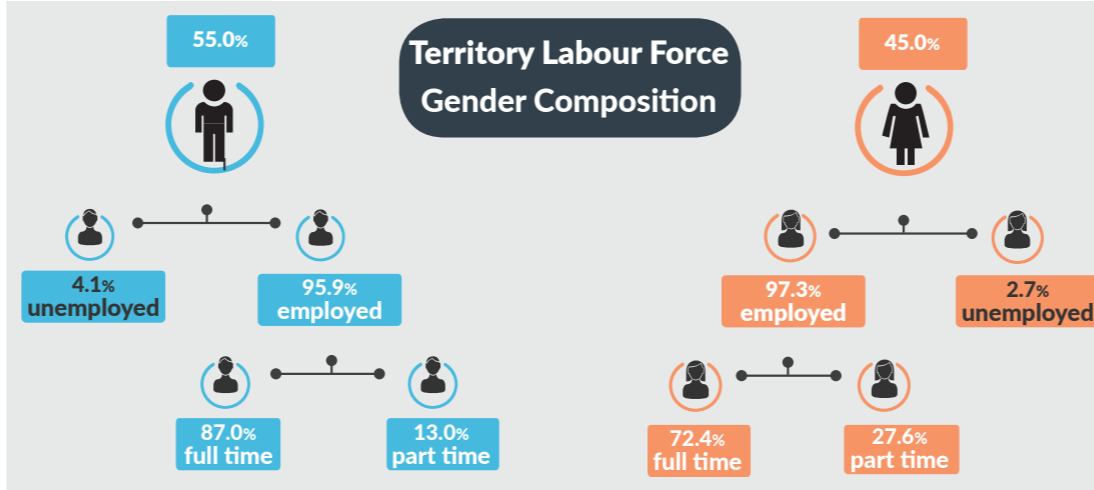
**4.23** unemployed persons per every job vacancy Nationally  
**2.27** unemployed persons per every NT job vacancy

## NT employment and participation rates

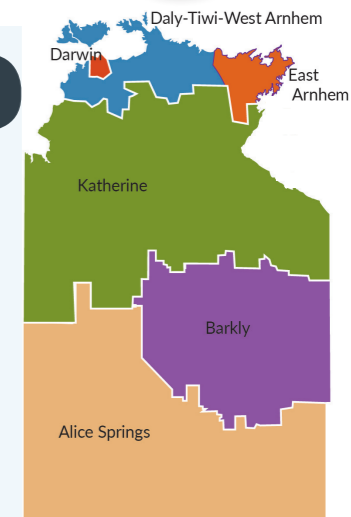
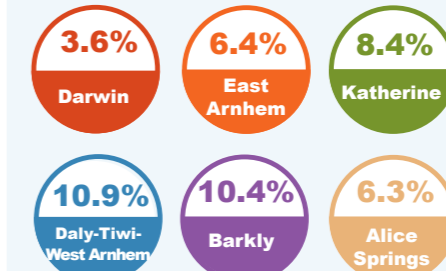


NT Indigenous participation rate (2014-15)  
**47%**  
 National participation rate  
**64.8%**

## Territory Labour Force Gender Composition



## Regional unemployment rates



## Industry share of Employment

**Top 5**

Retail **8.3%**

Education **7.5%**

Health Care **12.8%**

Construction **10.2%**

Public Admin **18.2%**

**61.5%** of employees in the NT are employed in the Greater Darwin region

## Employment Growth by Industry

**Top 5**

- rental and real estate services
- mining
- accommodation and food
- wholesale trade
- retail trade

Job Numbers	Year on Year %
2386	27.6
6163	18.7
9202	14.1
3004	10.4
1029	7.4

## Wage Price Index

- ▲ 0.20%** change in price of wages NT
- ▲ 0.20%** NT change in private sector
- ▲ 0.20%** NT change in public sector
- ▲ 0.40%** change in price of wages National