

Northern Territory Labour Market

December 2017

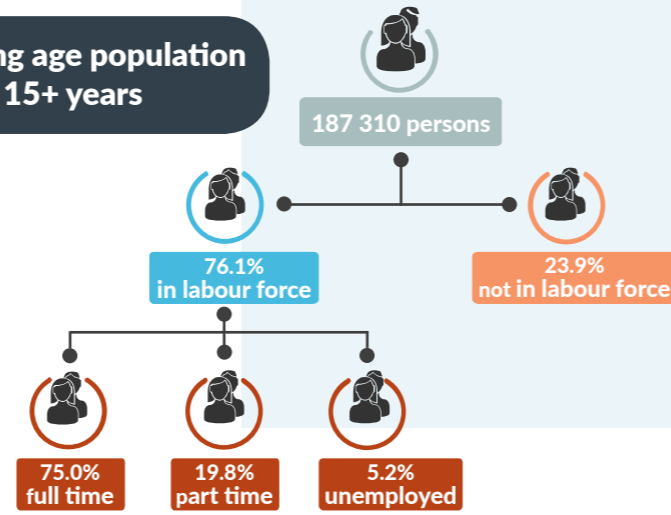


NT Population

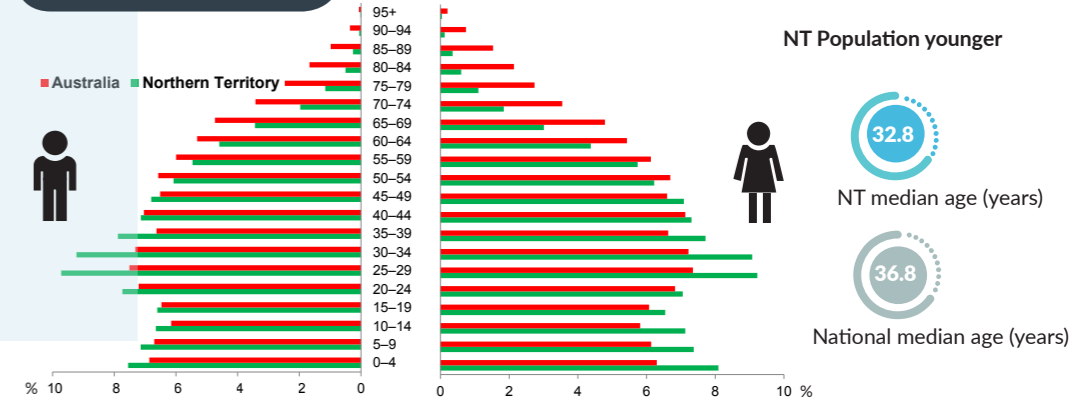
246 105 total resident population
 30.3% Aboriginal (Census data)
 59% live in Greater Darwin area
 1.0% of National population

24.8 million

Working age population 15+ years



Population Pyramid



Northern Territory

Employed

135 340 persons
 ▲ 366 persons

Total unemployed

levels 7361 persons rate 5.2%
 ▲ 408 persons ▲ 0.3 ppt
 National unemployment rate 5.4%
 ▼ 0.1 ppt

Youth unemployment

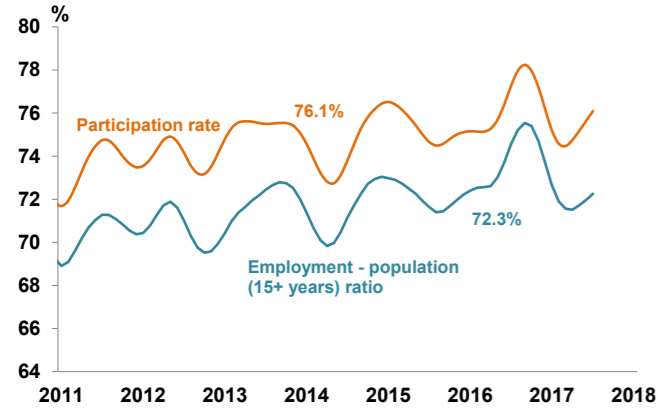
year average levels 1842 persons rate 8.7%
 ▲ 146 persons ▲ 0.7 ppt

Job vacancies

Yearly change NT 31.0% Australia 12.9%
 Quarterly change NT 13.2% Australia 3.6%

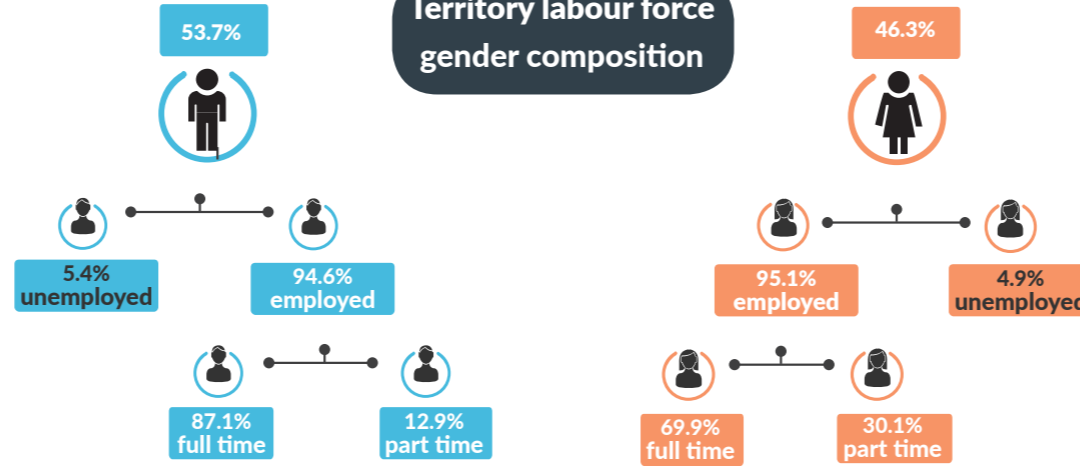
3.3 unemployed persons per every job vacancy nationally
 2.0 unemployed persons per every NT job vacancy

NT employment and participation rates

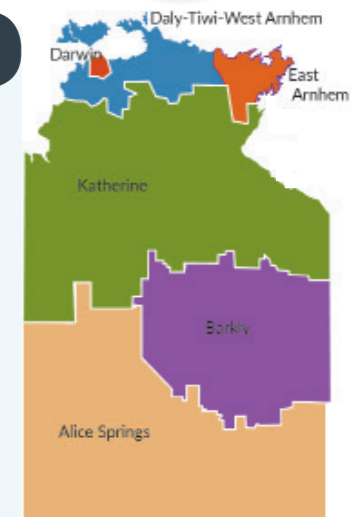
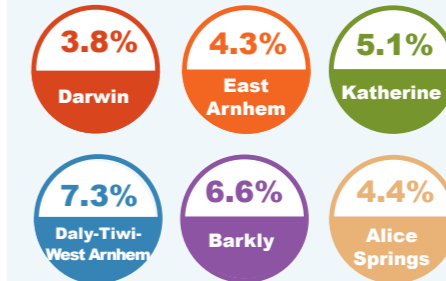


NT Aboriginal participation rate (2014-15) 47%
 National participation rate 65.5%

Territory labour force gender composition



Regional unemployment rates



Industry share of employment

Top 5

Retail 8.3%

Education 9.8%

Health Care 13.7%

Construction 10.6%

Public Admin 14.9%

61.5% of employees in the NT are employed in the Greater Darwin region

Employment growth by industry

Top 5

Industry	Job Numbers	Year on Year %
Education and training	13 510	19.9
Health care and social assistance	18 889	16.3
Manufacturing	4115	14.5
Administrative and support services	4206	10.1
Information media and telecommunications	1173	7.3

Wage price index

▲ 0.5% NT change in price of wages
 ▲ 0.6% NT change in private sector
 ▲ 0.3% NT change in public sector
 ▲ 0.8% National change in price of wages