

Northern Territory Labour Market

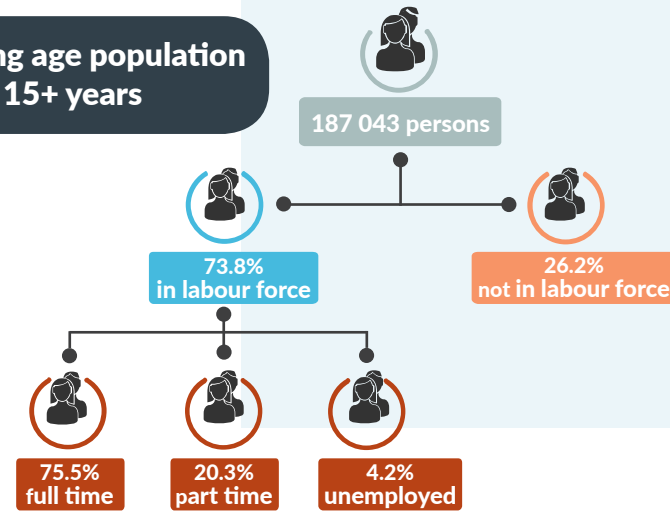
October 2017



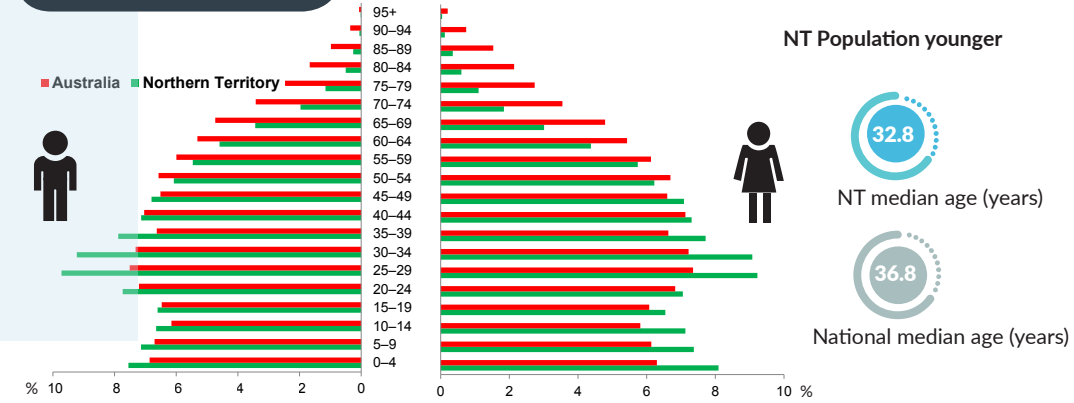
NT Population

244 990 total resident population
 30.3% Aboriginal (Census data)
 59% live in Greater Darwin area
 1.0% of National population
 24.72 million

Working age population 15+ years



Population Pyramid



Northern Territory

Employed

132 255 persons
 121 persons

Total unemployed

levels 5877 persons rate 4.2%
 242 persons 0.1 ppt
 National unemployment rate 5.5%
 flat

Youth unemployment

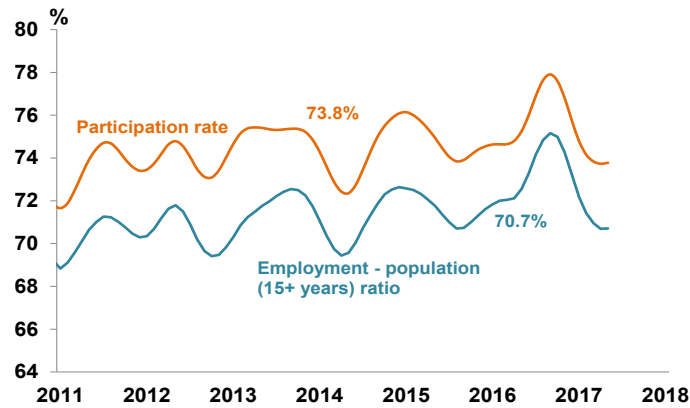
year average levels 1768 persons rate 7.9%
 12 persons flat

Job vacancies

Yearly change
 NT 30.2% Australia 11.0%
 Quarterly change
 NT 22.6% Australia 14.2%

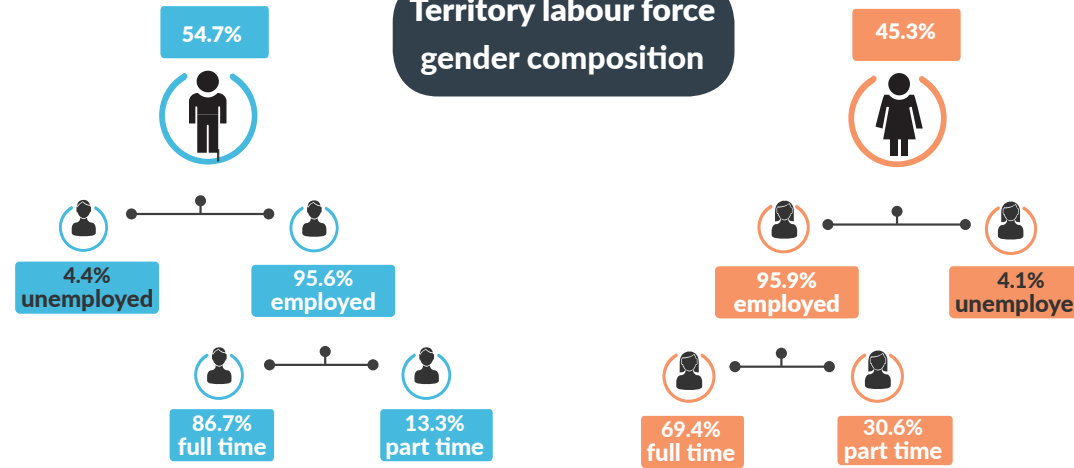
4.0 unemployed persons per every job vacancy nationally
 1.5 unemployed persons per every NT job vacancy

NT employment and participation rates

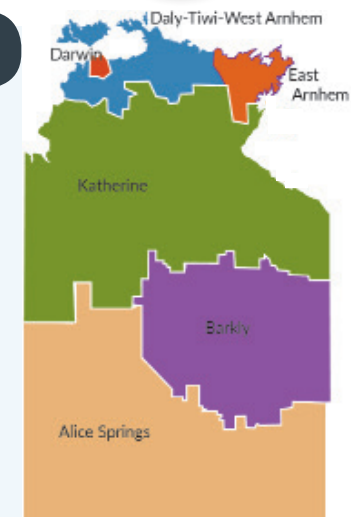
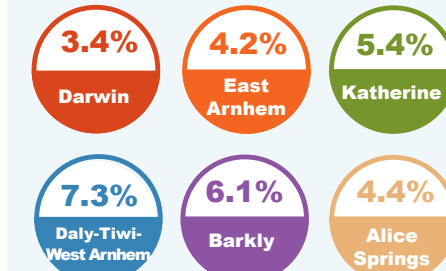


NT Aboriginal participation rate (2014-15) 47%
 National participation rate 65.2%

Territory labour force gender composition



Regional unemployment rates



Industry share of employment

Top 5

Retail 8.7%

Education 9.6%

Health Care 12.3%

Construction 10.5%

Public Admin 15.6%

61.5% of employees in the NT are employed in the Greater Darwin region

Employment growth by industry

Top 5

Industry	Job Numbers	Year on Year %
Agriculture, forestry and fishing	1587	24.5
Accommodation and food services	10 410	16.9
Education and training	13 113	15.8
Retail trade	11 888	14.4
Information media and telecommunications	1121	11.7

Wage price index

- 0.5% NT change in price of wages
- 0.6% NT change in private sector
- 0.3% NT change in public sector
- 0.8% National change in price of wages