

Northern Territory Labour Market

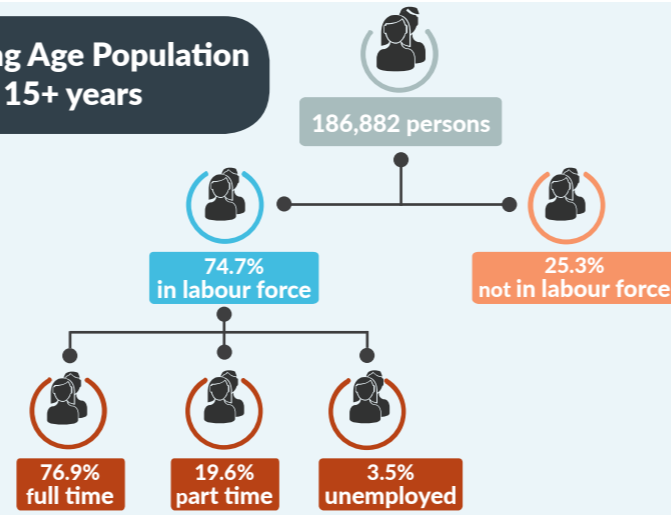
November 2016



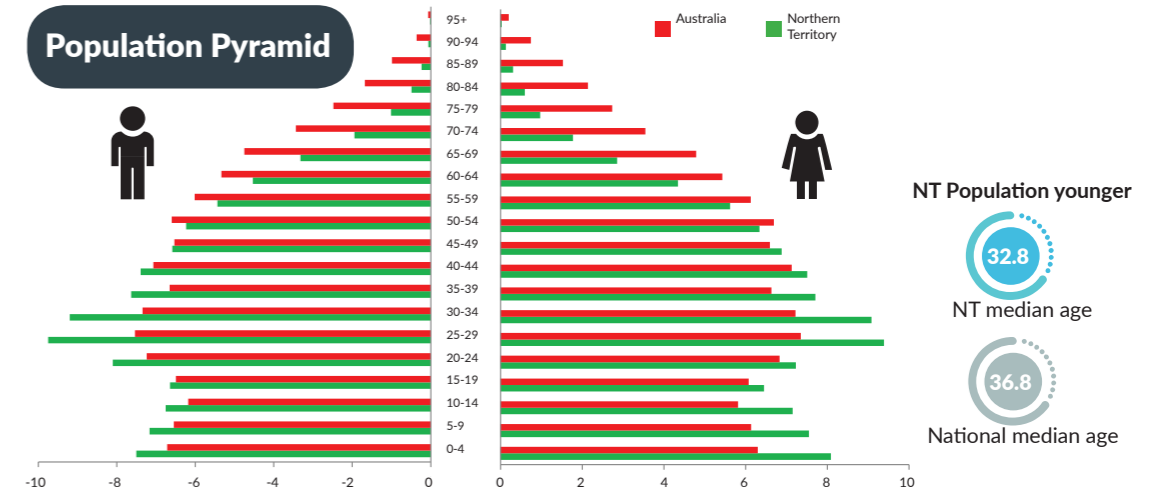
NT Population

244,036 total resident population
30% Indigenous (Census data)
58% live in Greater Darwin area
1% of National population
24.08 million

Working Age Population 15+ years



Population Pyramid



Employed

134,920 persons
▲ 139 persons



Total unemployed

levels **4,889 persons** rate **3.5%**
▲ 29 persons **-0.0 ppt**
 National unemployment rate **5.6%**
-0.0 ppt



Youth unemployment

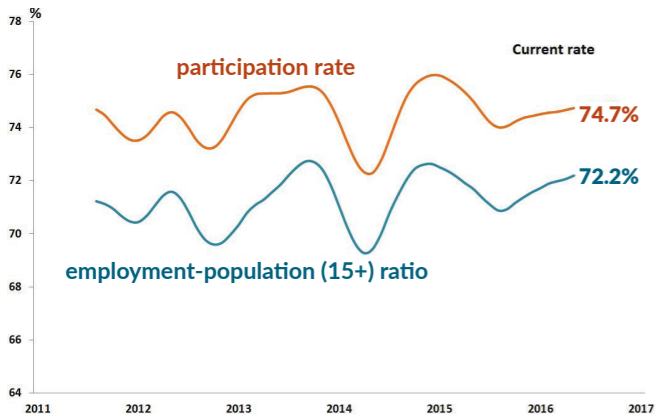
year average levels **1700 persons** rate **7.8%**
▼ 600 persons **▼ 2.3 ppt**

Job vacancies

Yearly change
 NT **▼ 19.3%** Australia **▲ 10.9%**
 Monthly change
 NT **▲ 4.3%** Australia **▲ 9.5%**

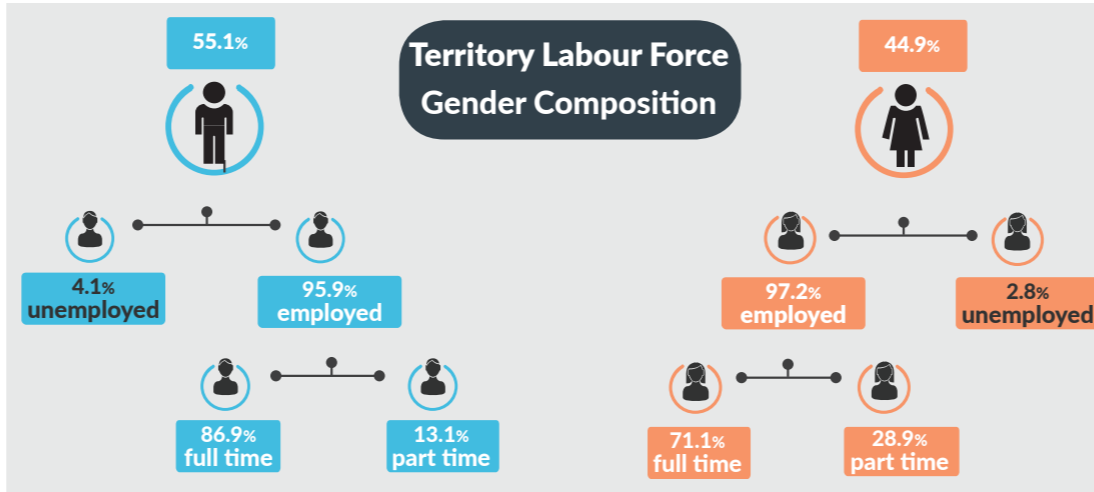
3.94 unemployed persons per every job vacancy Nationally
2.07 unemployed persons per every NT job vacancy

NT employment and participation rates

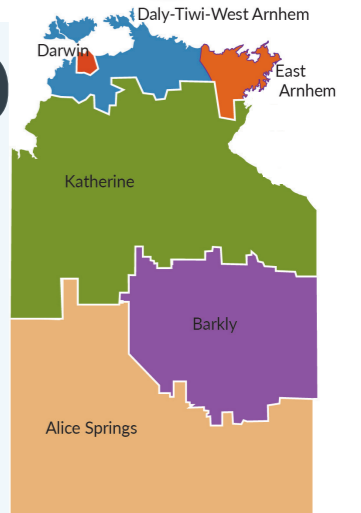
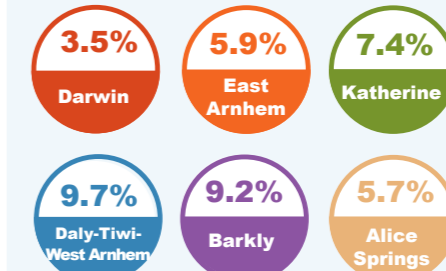


NT Indigenous participation rate (2014-15) **47%**
 National participation rate **64.7%**

Territory Labour Force Gender Composition



Regional unemployment rates



Industry share of Employment

Top 5

Retail **7.9%**

Education **8.6%**

Health Care **11.9%**

Construction **11.4%**

Public Admin **17.8%**

61.5% of employees in the NT are employed in the Greater Darwin region

Employment Growth by Industry

Top 5

- rental and real estate services
- electricity, gas, water and waste services
- retail trade
- arts and recreational services
- transport, postal and warehousing

Job Numbers	Year on Year %
2290	16.6
2546	11.6
10389	10.1
3479	7.1
6922	6.9

Wage Price Index

- ▲ 1.10%** change in price of wages NT
- ▲ 0.70%** NT change in private sector
- ▲ 2.00%** NT change in public sector
- ▲ 0.70%** change in price of wages National