

# Northern Territory Labour Market

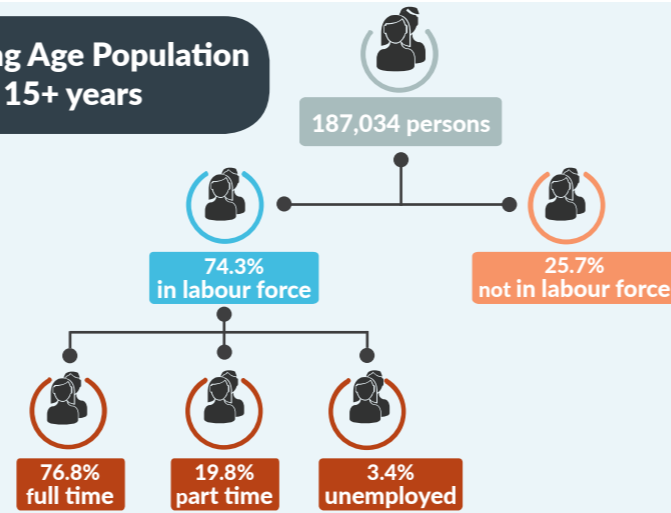
October 2016



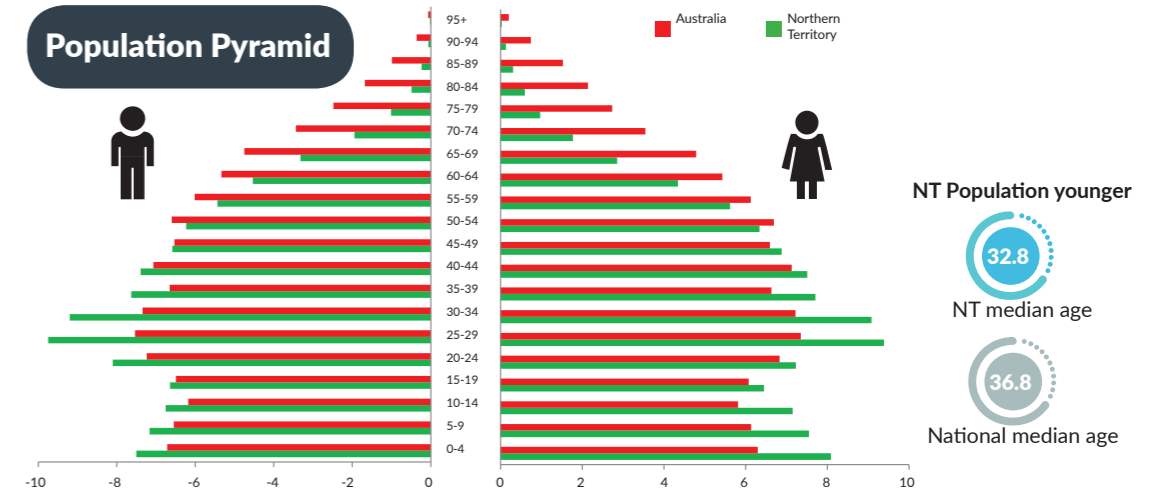
## NT Population

**244,036** total resident population  
**30%** Indigenous (Census data)  
**58%** live in Greater Darwin area  
**1%** of National population  
**24.08 million**

## Working Age Population 15+ years



## Population Pyramid



## Employed

**134,228 persons**  
 ▼ **67 persons**

## Total unemployed

levels **4,753 persons** rate **3.4%**  
 ▼ **60 persons** ▼ **0.1 ppt**  
 National unemployment rate **5.6%**  
 ▼ **0.1 ppt**

## Youth unemployment

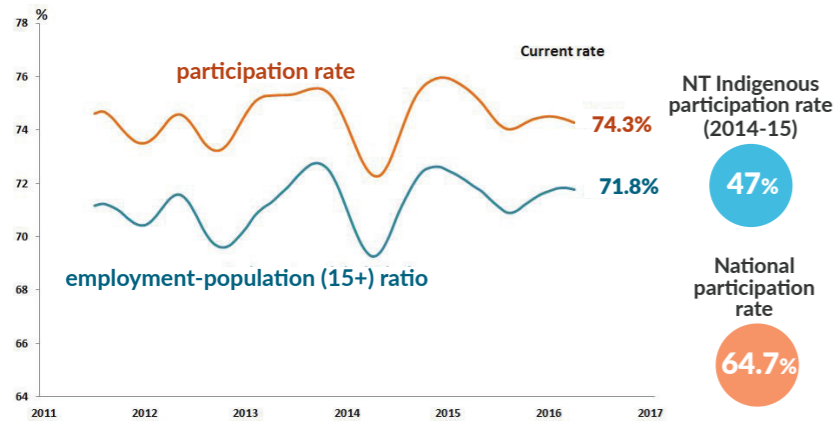
year average levels **1700 persons** rate **8.0%**  
 ▼ **600 persons** ▼ **2.1 ppt**

## Job vacancies

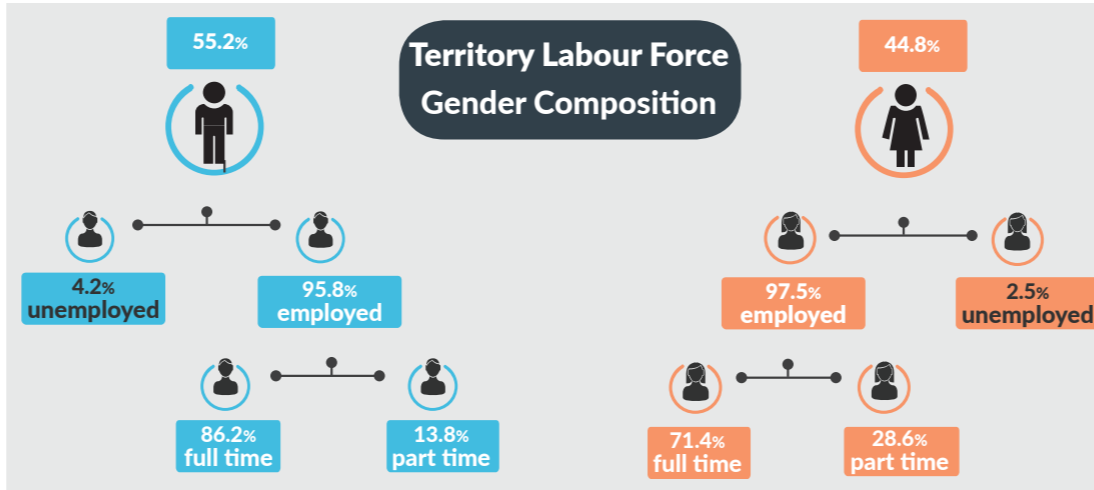
Yearly change  
 NT ▼ **19.3%** Australia ▲ **10.9%**  
 Monthly change  
 ▲ **4.3%** ▲ **9.5%**

**4.23** unemployed persons per every job vacancy Nationally  
**2.27** unemployed persons per every NT job vacancy

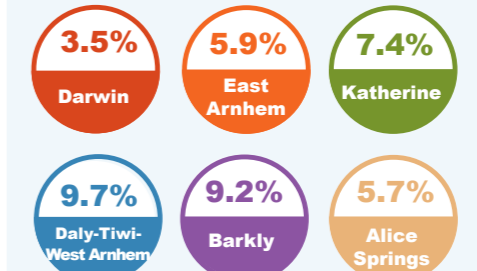
## NT employment and participation rates



## Territory Labour Force Gender Composition



## Regional unemployment rates



## Industry share of Employment

**Top 5**

Retail **7.9%**

Education **8.6%**

Health Care **11.9%**

Construction **11.4%**

Public Admin **17.8%**

**61.5%** of employees in the NT are employed in the Greater Darwin region

## Employment Growth by Industry

**Top 5**

- rental and real estate services
- electricity, gas, water and waste services
- retail trade
- arts and recreational services
- transport, postal and warehousing

Job Numbers	Year on Year %
2290	16.6
2546	11.6
10389	10.1
3479	7.1
6922	6.9

## Wage Price Index

- ▲ **0.20%** change in price of wages NT
- ▲ **0.30%** NT change in private sector
- **0.00%** NT change in public sector
- ▲ **0.40%** change in price of wages National