

Northern Territory Labour Market

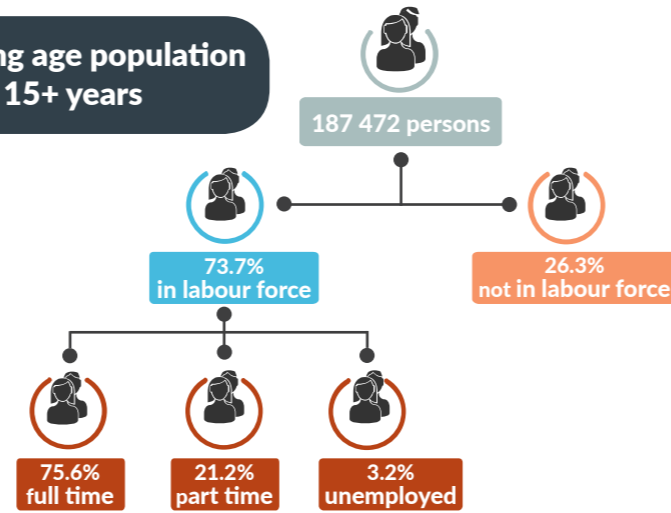
July 2017



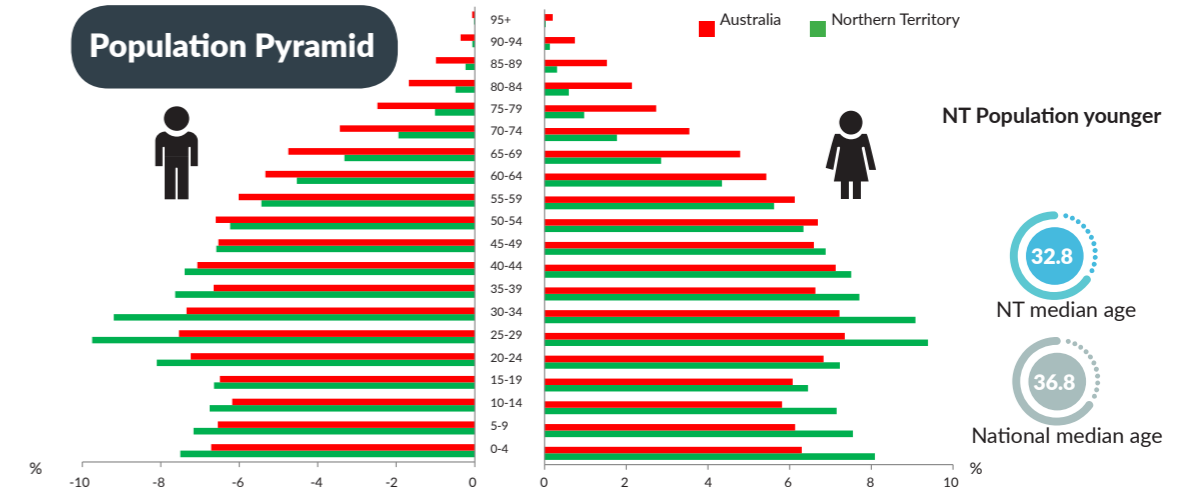
NT Population

245 048 total resident population
25.5% Aboriginal (Census data)
59% live in Greater Darwin area
1.0% of National population
24.62 million

Working age population 15+ years



Population Pyramid



Employed

133 775 persons
 ▼ **1647 persons**



Total unemployed

levels **4438 persons** rate **3.2%**
 ▼ **108 persons** **0.0 ppt**
 National unemployment rate **5.6%**



Youth unemployment

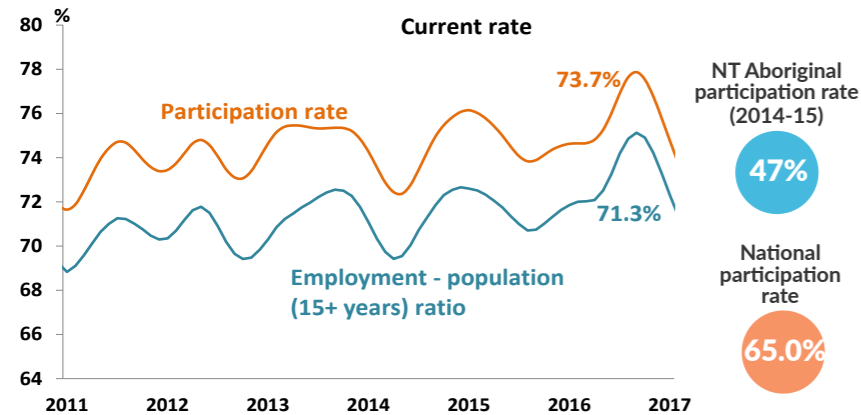
year average levels **1800 persons** rate **7.9%**
 ▼ **61 persons** ▼ **0.3 ppt**

Job vacancies

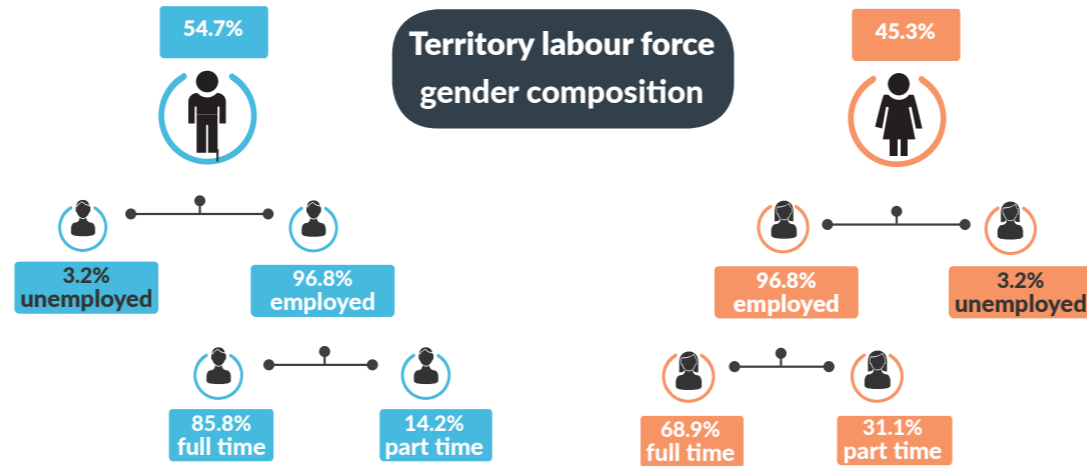
Yearly change
 NT **▲ 14.4%** Australia **▲ 9.4%**
 Quarterly change
 NT **▲ 6.9%** Australia **▼ 2.4%**

4.0 unemployed persons per every job vacancy nationally
1.5 unemployed persons per every NT job vacancy

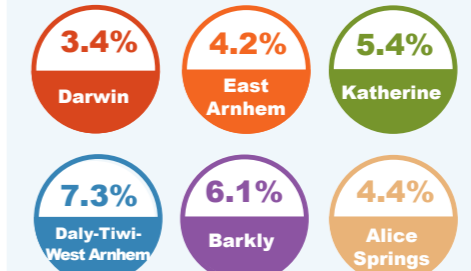
NT employment and participation rates



Territory labour force gender composition



Regional unemployment rates



Industry share of employment

Top 5

Retail **8.6%**

Education **9.2%**

Health Care **11.9%**

Construction **10.4%**

Public Admin **16.4%**

61.5% of employees in the NT are employed in the Greater Darwin region

Employment growth by industry

Top 5

Industry	Job Numbers	Year on Year %
Agriculture, forestry and fishing	1957	115.0
Retail trade	11 714	16.8
Electricity, gas, water and waste services	2711	15.9
Professional, scientific and technical services	7428	14.1
Information media and telecommunications	1211	12.7

Wage price index

- ▲ 0.2%** NT change in price of wages
- ▲ 0.3%** NT change in private sector
- ▲ 0.1%** NT change in public sector
- ▲ 0.4%** National change in price of wages